

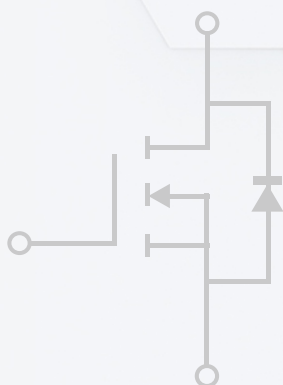
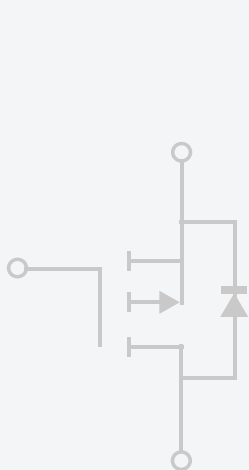
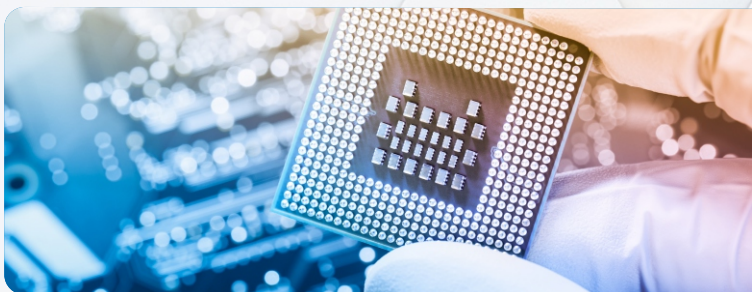
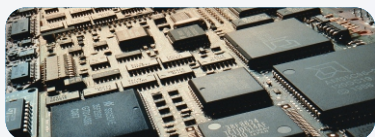


# MV & LV MOSFET CATALOG

Power Trench MOSFET

Power SGT MOSFET

Small Signal MOSFET





**WAYON**

上海维安电子 (WAYON) 成立于1996年, 总部位于上海浦东新区, 专注于电路保护及功率半导体产品技术研发, 专利数量超过200篇, 是全球少数几家掌握先进电路保护及功率半导体核心技术的供应商;

WAYON主要产品包括ESD & EOS、PTVS、TSS、SJ-MOSFET、MV/LV MOSFET、保护IC及电源管理IC; 从客户应用角度出发, 为客户提供专业可靠的产品解决方案, 应用领域涵盖5G通讯、物联网、安防监控、消费类电子产品、汽车电子及工业控制等。

---

Wayon Electronics Co., Ltd., established in 1996 with headquarter located in Pudong New Area of Shanghai is committed to the research and development of circuit protection and power semiconductor devices. With more than 200 patents, it is one of the few suppliers masters the core technologies of advanced circuit protection and power semiconductor in the world.

WAYON's product coverage includes ESD & EOS, PTVS, TSS, SJ-MOSFET, MV/LV MOSFET, protection IC and power management IC. It provides customers with professional and reliable product solutions from application perspective. The application areas cover 5G communications, Internet of Things, security monitoring, consumer electronics, automotive electronics, industrial control, and so on.





维安目前拥有上海、西安、深圳、台湾四个实验室，上海总部实验室面积超过2000m<sup>2</sup>。实验室可以完成器件单体测试评估、汽车级可靠性测试、系统级应用测试验证及失效分析；主要设备包括TLP测试系统、半导体分析仪、ESD测试系统、雷击浪涌设备等器件及系统应用测试设备；温度循环、高压反偏、高温高湿、X-ray等可靠性及失效分析设备。实验室已取得UL-CDTP Lab.和TUV-TMPL Lab.认证。

WAYON currently has four laboratories in Shanghai, Xi'an, Shenzhen, and Taiwan, with a laboratory area of over 2,000 square meters at the Shanghai headquarters. The laboratory can complete device single test evaluation, automotive-level reliability test, system-level application test verification and failure analysis. The main equipment includes devices and system application test equipment such as TLP test system, semiconductor analyzer, ESD test system and lightning surge equipment; reliability and failure analysis equipment such as temperature cycling, high voltage reverse bias, high temperature and high humidity, X-ray, etc. The laboratory has obtained UL-CDTP Lab. and TUV-TMPL Lab. certifications.

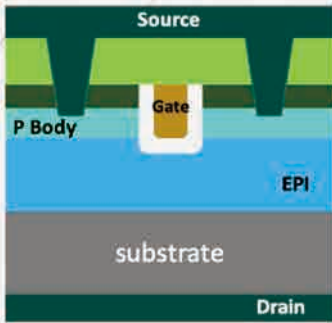


Power Efficiency



Technology Evolution

### Trench MOSFET



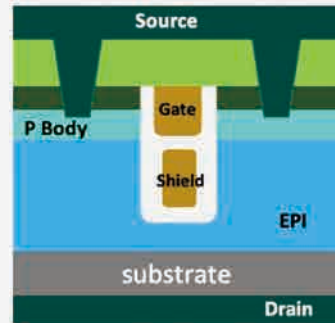
#### Key Features

- High cell density design
- Ideal for miniaturized packages
- G-S ESD protection embedded
- Voltage range: 12V-200V

#### Main Applications

- Load switch for wide range of applications
- Lithium battery protection
- Smart wear

### SGT MOSFET



#### Key Features

- Advance shield gate trench technology
- Ultra low gate charge
- High power integration
- Voltage range: 30V-250V

#### Main Applications

- Hi-frequency SMPS
- Hi-Power motor control
- Power battery management

# CONTENTS

## 目录

### **01-13**

#### **-100V-250V Power MOSFET**

12V-100V Trench P Channel Power MOSFET

20V-250V Trench N Channel Power MOSFET

30V-250V SGT N Channel Power MOSFET

Multi-Channel MOSFET Power MOSFET

### **13-16**

#### **-60V-100V Small Signal MOSFET**

### **17**

#### **Multi-Channel Small Signal MOSFET**

## -100V-250V Power MOSFET

### 12V-100V Trench P Channel Power MOSFET

| Part No.   | Package    | Configuration | Type | ESD | $V_{DS}$ | $V_{GS}$ Max | $I_b$ at 25 °C | $V_{GS}(th)$ | $R_{DS}(on)$ |               | Ciss      | Coss      | Crss      |
|------------|------------|---------------|------|-----|----------|--------------|----------------|--------------|--------------|---------------|-----------|-----------|-----------|
|            |            |               |      |     | V        | V            | A(Max.)        | Typ.         | $V_{GS}=10V$ | $V_{GS}=4.5V$ |           |           |           |
|            |            |               |      |     | V        | V            | A(Max.)        | V            | mΩ (Max.)    | mΩ (Max.)     | pF (Typ.) | pF (Typ.) | pF (Typ.) |
| WM02P160R  | DFN2*2-6L  | Single        | P    | NO  | -20      | ±10          | -16            | -0.6         | /            | 17            | 2895      | 303       | 280       |
| WMQ55P02T1 | PDFN3*3-8L | Single        | P    | NO  | -20      | ±10          | -55            | -0.65        | /            | 8.2           | 4550      | 542       | 505       |
| WMS15P02T1 | SOP-8L     | Single        | P    | NO  | -20      | ±10          | -15            | -0.65        | /            | 8.2           | 3138      | 602       | 565       |
| WMR12P02T1 | DFN2*2-6L  | Single        | P    | NO  | -20      | ±10          | -12            | -0.65        | /            | 22            | 1555      | 189       | 166       |
| WMB60P03TA | PDFN5*6-8L | Single        | P    | NO  | -30      | ±20          | -60            | -1.6         | 9            | 14            | 3100      | 433       | 350       |
| WMQ50P03T1 | PDFN3*3-8L | Single        | P    | NO  | -30      | ±20          | -50            | -1.5         | 9            | 14            | 3958      | 440       | 341       |
| WMS14P03T1 | SOP-8L     | Single        | P    | NO  | -30      | ±20          | -14            | -1.5         | 9.2          | 14            | 3758      | 445       | 325       |
| WMQ42P03T1 | PDFN3*3-8L | Single        | P    | NO  | -30      | ±20          | -42            | -1.5         | 14           | 22            | 2500      | 280       | 220       |
| WMO50P03T1 | TO-252     | Single        | P    | NO  | -30      | ±20          | -50            | -1.7         | 14           | 22            | 2697      | 340       | 308       |
| WMS12P03T1 | SOP-8L     | Single        | P    | NO  | -30      | ±20          | -11.5          | -1.5         | 15           | 25            | 2335      | 280       | 219       |
| WM03P115R  | DFN2*2-6L  | Single        | P    | NO  | -30      | ±20          | -11.5          | -1.6         | 24           | 34            | 1410      | 180       | 153       |
| WMQ30P03T1 | PDFN3*3-8L | Single        | P    | NO  | -30      | ±20          | -30            | -1.5         | 24           | 35            | 1405      | 177       | 147       |
| WMS08P03T1 | SOP-8L     | Single        | P    | NO  | -30      | ±20          | -8             | -1.5         | 28           | 38            | 1211      | 155       | 139       |
| WMQ25P03T1 | PDFN3*3-8L | Single        | P    | NO  | -30      | ±20          | -25            | -1.5         | 28           | 38            | 1211      | 155       | 139       |
| WMQ30P04T1 | PDFN3*3-8L | Single        | P    | NO  | -40      | ±20          | -30            | -1.6         | 13           | 20            | 3597      | 316       | 249       |
| WMS13P04T1 | SOP-8L     | Single        | P    | NO  | -40      | ±20          | -13            | -1.6         | 13           | 20            | 3430      | 292       | 225       |
| WMO50P04T1 | TO-252     | Single        | P    | NO  | -40      | ±20          | -50            | -1.6         | 13           | 20            | 3320      | 290       | 225       |
| WMS11P04T1 | SOP-8L     | Single        | P    | NO  | -40      | ±20          | -11            | -1.5         | 20           | 25            | 1822      | 183       | 158       |
| WMO35P04T1 | TO-252     | Single        | P    | NO  | -40      | ±20          | -32            | -1.5         | 20           | 25            | 1822      | 183       | 158       |
| WMB35P04T1 | PDFN5*6-8L | Single        | P    | NO  | -40      | ±20          | -35            | -1.5         | 20           | 25            | 1822      | 183       | 158       |
| WMQ25P04T1 | PDFN3*3-8L | Single        | P    | NO  | -40      | ±20          | -25            | -1.5         | 20           | 25            | 1822      | 183       | 158       |
| WMS06P04T1 | SOP-8L     | Single        | P    | NO  | -40      | ±20          | -6             | -1.5         | 44           | 58            | 878       | 86        | 70        |
| WMO20P04T1 | TO-252     | Single        | P    | NO  | -40      | ±20          | -25            | -1.5         | 44           | 58            | 878       | 86        | 70        |
| WMO18P04T1 | TO-252     | Single        | P    | NO  | -40      | ±20          | -18            | -1.6         | 50           | 60            | 780       | 77        | 65        |



**12V-100V Trench P Channel Power MOSFET**

| Part No.   | Package    | Configura<br>tion | Type | ESD | V <sub>DS</sub><br>V | V <sub>GS</sub> Max<br>V | I <sub>D</sub> at 25<br>°C<br>A(Max.) | V <sub>GS</sub> (th) | R <sub>DS(on)</sub>  |                        | Ciss<br>pF<br>(Typ.) | Coss<br>pF<br>(Typ.) | Crss<br>pF<br>(Typ.) |
|------------|------------|-------------------|------|-----|----------------------|--------------------------|---------------------------------------|----------------------|----------------------|------------------------|----------------------|----------------------|----------------------|
|            |            |                   |      |     |                      |                          |                                       | Typ.                 | V <sub>GS</sub> =10V | V <sub>GS</sub> =-4.5V |                      |                      |                      |
|            |            |                   |      |     |                      |                          |                                       | V                    | mΩ<br>(Max.)         | mΩ<br>(Max.)           |                      |                      |                      |
| WMQ25P06T1 | PDFN3*3-8L | Single            | P    | NO  | -60                  | ±20                      | -25                                   | -1.6                 | 28                   | 35                     | 3135                 | 200                  | 121                  |
| WMO35P06T1 | TO-252     | Single            | P    | NO  | -60                  | ±20                      | -35                                   | -1.5                 | 28                   | 35                     | 3135                 | 200                  | 121                  |
| WMO25P06T1 | TO-252     | Single            | P    | NO  | -60                  | ±20                      | -25                                   | -1.7                 | 40                   | 55                     | 1735                 | 122                  | 78                   |
| WMS05P06T1 | SOP-8L     | Single            | P    | NO  | -60                  | ±20                      | -4.5                                  | -1.6                 | 90                   | 128                    | 1015                 | 50                   | 35                   |
| WMO13P06T1 | TO-252     | Single            | P    | NO  | -60                  | ±20                      | -13                                   | -1.6                 | 90                   | 128                    | 1015                 | 50                   | 35                   |
| WMQ12P10T1 | PDFN3*3-8L | Single            | P    | NO  | -100                 | ±20                      | -12                                   | -1.7                 | 100                  | 120                    | 3010                 | 86                   | 60                   |
| WMS05P10T1 | SOP-8L     | Single            | P    | NO  | -100                 | ±20                      | -5                                    | -1.7                 | 100                  | 120                    | 1093                 | 113                  | 8                    |
| WMO18P10T1 | TO-252     | Single            | P    | NO  | -100                 | ±20                      | -18                                   | -1.7                 | 110                  | 120                    | 1080                 | 112                  | 9                    |

**20V-250V Trench N Channel Power MOSFET**

| Part No.    | Package    | Configura<br>tion | Type | ESD | V <sub>DS</sub><br>V | V <sub>GS</sub> Max<br>V | I <sub>D</sub> at 25<br>°C<br>A(Max.) | V <sub>GS</sub> (th) | R <sub>DS(on)</sub>  |                        | Ciss<br>pF<br>(Typ.) | Coss<br>pF<br>(Typ.) | Crss<br>pF<br>(Typ.) |
|-------------|------------|-------------------|------|-----|----------------------|--------------------------|---------------------------------------|----------------------|----------------------|------------------------|----------------------|----------------------|----------------------|
|             |            |                   |      |     |                      |                          |                                       | Typ.                 | V <sub>GS</sub> =10V | V <sub>GS</sub> =-4.5V |                      |                      |                      |
|             |            |                   |      |     |                      |                          |                                       | V                    | mΩ<br>(Max.)         | mΩ<br>(Max.)           |                      |                      |                      |
| WMQ30N02T1  | PDFN3*3-8L | Single            | N    | NO  | 20                   | ±10                      | 30                                    | 0.65                 | /                    | 4.5                    | 3850                 | 490                  | 440                  |
| WMO90N02T1  | TO-252     | Single            | N    | NO  | 20                   | ±10                      | 90                                    | 0.65                 | /                    | 4.5                    | 3850                 | 490                  | 440                  |
| WMR15N02T1  | DFN2*2-6L  | Single            | N    | NO  | 20                   | ±10                      | 15                                    | 0.65                 | /                    | 6                      | 2445                 | 426                  | 202                  |
| WMO60N02T1  | TO-252     | Single            | N    | NO  | 20                   | ±10                      | 60                                    | 0.7                  | /                    | 6                      | 2280                 | 300                  | 270                  |
| WMR09N02T1  | DFN2*2-6L  | Single            | N    | YES | 20                   | ±12                      | 9                                     | 0.6                  | /                    | 22                     | 850                  | 140                  | 105                  |
| WMB90N03T1  | PDFN5*6-8L | Single            | N    | NO  | 30                   | ±20                      | 90                                    | 1.7                  | 3                    | 6                      | 3300                 | 505                  | 420                  |
| WMK180N03T1 | TO-220     | Single            | N    | NO  | 30                   | ±20                      | 180                                   | 1.6                  | 3.2                  | 6                      | 3570                 | 510                  | 431                  |
| WMO150N03T1 | TO-252     | Single            | N    | NO  | 30                   | ±20                      | 150                                   | 1.6                  | 3.2                  | 6                      | 3570                 | 510                  | 431                  |
| WMM180N03T1 | TO-263     | Single            | N    | NO  | 30                   | ±20                      | 180                                   | 1.6                  | 3.2                  | 6                      | 3570                 | 510                  | 431                  |
| WMQ80N03T1  | PDFN3*3-8L | Single            | N    | NO  | 30                   | ±20                      | 80                                    | 1.7                  | 4                    | 6                      | 2808                 | 420                  | 297                  |
| WMB108N03T1 | PDFN5*6-8L | Single            | N    | NO  | 30                   | ±20                      | 108                                   | 1.6                  | 4                    | 6                      | 2912                 | 416                  | 289                  |
| WMS15N03T1  | SOP-8L     | Single            | N    | NO  | 30                   | ±20                      | 15                                    | 1.7                  | 4                    | 6                      | 2808                 | 420                  | 297                  |
| WMO96N03T1  | TO-252     | Single            | N    | NO  | 30                   | ±20                      | 96                                    | 1.7                  | 4                    | 6                      | 2808                 | 420                  | 297                  |

### 20V-250V Trench N Channel Power MOSFET

| Part No.   | Package    | Configura<br>tion | Type | ESD | $V_{DS}$ | $V_{GS}$ Max | $I_B$ at 25<br>°C | $V_{GS}(th)$ | $R_{DS}(on)$ |               | $C_{iss}$    | $C_{oss}$    | $Cr_{ss}$    |
|------------|------------|-------------------|------|-----|----------|--------------|-------------------|--------------|--------------|---------------|--------------|--------------|--------------|
|            |            |                   |      |     | V        | V            | A(Max.)           | Typ.         | $V_{GS}=10V$ | $V_{GS}=4.5V$ |              |              |              |
|            |            |                   |      |     | V        | V            | A(Max.)           | V            | mΩ<br>(Max.) | mΩ<br>(Max.)  | pF<br>(Typ.) | pF<br>(Typ.) | pF<br>(Typ.) |
| WMQ40N03T1 | PDFN3*3-8L | Single            | N    | NO  | 30       | ±20          | 40                | 1.7          | 5.5          | 9             | 1895         | 267          | 192          |
| WMB81N03T1 | PDFN5*6-8L | Single            | N    | NO  | 30       | ±20          | 81                | 1.7          | 5.5          | 9             | 1880         | 267          | 185          |
| WMO80N03T1 | TO-252     | Single            | N    | NO  | 30       | ±20          | 80                | 1.7          | 5.5          | 9             | 1860         | 267          | 180          |
| WMS13N03T1 | SOP-8L     | Single            | N    | NO  | 30       | ±20          | 13                | 1.7          | 6            | 9             | 1846         | 267          | 190          |
| WMK75N03T1 | TO-220     | Single            | N    | NO  | 30       | ±20          | 75                | 1.6          | 6            | 9             | 1895         | 267          | 192          |
| WMQ38N03T1 | PDFN3*3-8L | Single            | N    | NO  | 30       | ±20          | 38                | 1.6          | 6.5          | 11            | 1220         | 232          | 122          |
| WMB70N03T1 | PDFN5*6-8L | Single            | N    | NO  | 30       | ±20          | 70                | 1.6          | 6.5          | 11            | 1220         | 232          | 122          |
| WMS12N03TA | SOP-8L     | Single            | N    | NO  | 30       | ±20          | 12.5              | 1.6          | 6.5          | 11            | 1220         | 232          | 122          |
| WMK70N03T1 | TO-220     | Single            | N    | NO  | 30       | ±20          | 70                | 1.6          | 6.5          | 11            | 1220         | 232          | 122          |
| WMO70N03T1 | TO-252     | Single            | N    | NO  | 30       | ±20          | 70                | 1.6          | 6.5          | 11            | 1220         | 232          | 122          |
| WMR14N03TA | DFN2*2-6L  | Single            | N    | NO  | 30       | ±20          | 13.8              | 1.6          | 7.2          | 10            | 1150         | 188          | 137          |
| WMR14N03TB | DFN2*2-6L  | Single            | N    | NO  | 30       | ±20          | 14                | 1.6          | 7.5          | 10.2          | 1130         | 188          | 137          |
| WMQ46N03T1 | PDFN3*3-8L | Single            | N    | NO  | 30       | ±20          | 46                | 1.5          | 8.5          | 13            | 1290         | 178          | 111          |
| WMB58N03T1 | PDFN5*6-8L | Single            | N    | NO  | 30       | ±20          | 58                | 1.7          | 8.5          | 14            | 1298         | 170          | 138          |
| WMO55N03T1 | TO-252     | Single            | N    | NO  | 30       | ±20          | 55                | 1.6          | 8.5          | 12.5          | 1107         | 163          | 115          |
| WMR12N03T1 | DFN2*2-6L  | Single            | N    | NO  | 30       | ±20          | 12                | 1.6          | 9            | 12.5          | 1250         | 174          | 142          |
| WMR12N03TA | DFN2*2-6L  | Single            | N    | NO  | 30       | ±20          | 12                | 1.6          | 9.5          | 13            | 1380         | 170          | 152          |
| WMR13N03T1 | DFN2*2-6L  | Single            | N    | NO  | 30       | ±12          | 12.5              | 0.75         | 11           | 13.5          | 1850         | 150          | 124          |
| WMR10N03T1 | DFN2*2-6L  | Single            | N    | NO  | 30       | ±20          | 10                | 1.75         | 12           | 16.5          | 842          | 126          | 83           |
| WMQ37N03T1 | PDFN3*3-8L | Single            | N    | NO  | 30       | ±20          | 37                | 1.7          | 12           | 16.5          | 830          | 131          | 85           |
| WMB46N03T1 | PDFN5*6-8L | Single            | N    | NO  | 30       | ±20          | 46                | 1.7          | 12           | 16.5          | 832          | 125          | 84           |
| WM03N115A  | SOP-8L     | Single            | N    | NO  | 30       | ±20          | 11.5              | 1.5          | 12           | 16            | 1140         | 165          | 110          |
| WMR07N03T1 | DFN2*2-6L  | Single            | N    | NO  | 30       | ±20          | 7                 | 1.7          | 18           | 28            | 500          | 75           | 51           |
| WMQ28N03T1 | PDFN3*3-8L | Single            | N    | NO  | 30       | ±20          | 28                | 1.75         | 18           | 30            | 500          | 75           | 51           |
| WM03N105A  | SOP-8L     | Single            | N    | NO  | 30       | ±20          | 10.5              | 1.75         | 23           | 32            | 511          | 77           | 55           |
| WMT07N03T1 | SOT-223    | Single            | N    | NO  | 30       | ±20          | 7                 | 1.5          | 36           | 45            | 500          | 72           | 58           |





20V-250V Trench N Channel Power MOSFET

| Part No.   | Package    | Configura<br>tion | Type | ESD | V <sub>DS</sub> | V <sub>GS</sub> Max | I <sub>D</sub> at 25<br>°C | V <sub>GS</sub> (th) | R <sub>θs</sub> (on) |                        | Ciss         | Coss         | Crss         |
|------------|------------|-------------------|------|-----|-----------------|---------------------|----------------------------|----------------------|----------------------|------------------------|--------------|--------------|--------------|
|            |            |                   |      |     | V               | V                   | A(Max.)                    | Typ.                 | V <sub>GS</sub> =10V | V <sub>GS</sub> =-4.5V |              |              |              |
|            |            |                   |      |     |                 |                     |                            | V                    | mΩ<br>(Max.)         | mΩ<br>(Max.)           | pF<br>(Typ.) | pF<br>(Typ.) | pF<br>(Typ.) |
| WMB70N04T1 | PDFN5*6-8L | Single            | N    | NO  | 40              | ±20                 | 70                         | 1.5                  | 6.5                  | 8.5                    | 3260         | 245          | 185          |
| WMQ55N04T1 | PDFN3*3-8L | Single            | N    | NO  | 40              | ±20                 | 55                         | 1.5                  | 6.6                  | 8.8                    | 3310         | 280          | 209          |
| WMO75N04T1 | TO-252     | Single            | N    | NO  | 40              | ±20                 | 75                         | 1.5                  | 6.6                  | 8.8                    | 3310         | 280          | 209          |
| WMK80N04T1 | TO-220     | Single            | N    | NO  | 40              | ±20                 | 80                         | 1.7                  | 7                    | 12                     | 2400         | 192          | 160          |
| WMO60N04T1 | TO-252     | Single            | N    | NO  | 40              | ±20                 | 60                         | 1.7                  | 7                    | 12                     | 2400         | 192          | 160          |
| WMQ50N04T1 | PDFN3*3-8L | Single            | N    | NO  | 40              | ±20                 | 50                         | 1.7                  | 7.5                  | 14                     | 2365         | 185          | 153          |
| WMB56N04T1 | PDFN5*6-8L | Single            | N    | NO  | 40              | ±20                 | 56                         | 1.75                 | 7.6                  | 15                     | 2370         | 190          | 162          |
| WMQ30N04TS | PDFN3*3-8L | Single            | N    | NO  | 40              | ±20                 | 30                         | 1.6                  | 12.5                 | 20                     | 1230         | 135          | 110          |
| WMB40N04TS | PDFN5*6-8L | Single            | N    | NO  | 40              | ±20                 | 40                         | 1.6                  | 12.5                 | 20                     | 1230         | 135          | 110          |
| WMS10N04TS | SOP-8L     | Single            | N    | NO  | 40              | ±20                 | 10                         | 1.6                  | 12.5                 | 20                     | 1230         | 135          | 110          |
| WMO40N04TS | TO-252     | Single            | N    | NO  | 40              | ±20                 | 40                         | 1.6                  | 12.5                 | 20                     | 1230         | 135          | 110          |
| WMQ26NV4T1 | PDFN3*3-8L | Single            | N    | NO  | 45              | ±20                 | 26                         | 1.5                  | 18                   | 22.5                   | 1090         | 92           | 78           |
| WMS08NV4T1 | SOP-8L     | Single            | N    | NO  | 45              | ±20                 | 8                          | 1.5                  | 18                   | 22.5                   | 1090         | 92           | 78           |
| WMO26NV4T1 | TO-252     | Single            | N    | NO  | 45              | ±20                 | 26                         | 1.5                  | 18                   | 22.5                   | 1090         | 92           | 78           |
| WMO80N06T1 | TO-252     | Single            | N    | NO  | 60              | ±20                 | 80                         | 3                    | 7.2                  | /                      | 3692         | 263.2        | 218          |
| WMK80N06T1 | TO-220     | Single            | N    | NO  | 60              | ±20                 | 80                         | 3                    | 7.6                  | /                      | 3692         | 263.2        | 218          |
| WMB75N06T1 | PDFN5*6-8L | Single            | N    | NO  | 60              | ±20                 | 75                         | 1.9                  | 8.5                  | 12                     | 3307         | 201          | 151          |
| WMS13N06T1 | SOP-8L     | Single            | N    | NO  | 60              | ±20                 | 13                         | 1.8                  | 8.5                  | 12                     | 3307         | 201          | 151          |
| WMQ44N06T1 | PDFN3*3-8L | Single            | N    | NO  | 60              | ±20                 | 44                         | 1.8                  | 12                   | 15                     | 2750         | 210          | 146          |
| WMB52N06T1 | PDFN5*6-8L | Single            | N    | NO  | 60              | ±20                 | 52                         | 1.7                  | 12                   | 15                     | 2650         | 148          | 114          |
| WMS10N06T1 | SOP-8L     | Single            | N    | NO  | 60              | ±20                 | 10                         | 1.7                  | 12                   | 15                     | 2600         | 205          | 150          |
| WMK50N06TS | TO-220     | Single            | N    | NO  | 60              | ±20                 | 50                         | 1.7                  | 16                   | 20                     | 2690         | 120          | 98           |
| WMO50N06TS | TO-252     | Single            | N    | NO  | 60              | ±20                 | 50                         | 1.9                  | 16                   | 20                     | 2690         | 120          | 98           |
| WMQ30N06TS | PDFN3*3-8L | Single            | N    | NO  | 60              | ±20                 | 30                         | 1.5                  | 20                   | 25                     | 1900         | 165          | 123          |
| WMS09N06TS | SOP-8L     | Single            | N    | NO  | 60              | ±20                 | 9                          | 1.5                  | 20                   | 25                     | 1900         | 165          | 123          |
| WMO35N06T1 | TO-252     | Single            | N    | NO  | 60              | ±20                 | 35                         | 1.5                  | 20                   | 25                     | 1900         | 165          | 123          |

### 20V-250V Trench N Channel Power MOSFET

| Part No.      | Package    | Configuration | Type | ESD | $V_{DS}$ | $V_{GS}$ Max | $I_b$ at 25 °C | $V_{GS}(th)$ | $R_{DS}(on)$ |               | $C_{iss}$ | $C_{oss}$ | $Cr_{ss}$ |
|---------------|------------|---------------|------|-----|----------|--------------|----------------|--------------|--------------|---------------|-----------|-----------|-----------|
|               |            |               |      |     | V        | V            | A(Max.)        | Typ.         | $V_{GS}=10V$ | $V_{GS}=4.5V$ | pF (Typ.) | pF (Typ.) | pF (Typ.) |
|               |            |               |      |     | V        | V            | A(Max.)        | V            | mΩ (Max.)    | mΩ (Max.)     | pF (Typ.) | pF (Typ.) | pF (Typ.) |
| WMR07N06TS    | DFN2*2-6L  | Single        | N    | NO  | 60       | ±20          | 7              | 1.7          | 32           | 40            | 1355      | 60        | 49        |
| WMQ20N06TS    | PDFN3*3-8L | Single        | N    | NO  | 60       | ±20          | 25             | 1.7          | 32           | 40            | 1355      | 60        | 49        |
| WMB26N06TS    | PDFN5*6-8L | Single        | N    | NO  | 60       | ±20          | 25             | 1.7          | 32           | 40            | 1355      | 60        | 49        |
| WMS08N06TS    | SOP-8L     | Single        | N    | NO  | 60       | ±20          | 8              | 1.7          | 32           | 40            | 1355      | 60        | 49        |
| WMT07N06TS    | SOT-223    | Single        | N    | NO  | 60       | ±20          | 7              | 1.7          | 32           | 40            | 1355      | 60        | 49        |
| WMK25N06TS    | TO-220     | Single        | N    | NO  | 60       | ±20          | 25             | 1.6          | 32           | 40            | 1355      | 60        | 49        |
| WMO25N06TS    | TO-252     | Single        | N    | NO  | 60       | ±20          | 25             | 1.7          | 32           | 40            | 1355      | 60        | 49        |
| WML18N06TS    | TO-220F    | Single        | N    | NO  | 60       | ±20          | 18             | 1.7          | 35           | 45            | 1325      | 59        | 49        |
| WMB100N07TS   | PDFN5*6-8L | Single        | N    | NO  | 70       | ±20          | 100            | 3            | 7            | /             | 4030      | 271       | 189       |
| WMK100N07TS   | TO-220     | Single        | N    | NO  | 70       | ±20          | 100            | 3            | 7            | /             | 4030      | 271       | 189       |
| WMO100N07T1   | TO-252     | Single        | N    | NO  | 70       | ±20          | 100            | 3            | 7            | /             | 4030      | 271       | 189       |
| WML100N07TS   | TO-220F    | Single        | N    | NO  | 70       | ±20          | 100            | 3            | 7.4          | /             | 4030      | 271       | 189       |
| WMK90N08TS    | TO-220     | Single        | N    | NO  | 80       | ±20          | 90             | 3            | 8.5          | /             | 6450      | 270       | 220       |
| WMM90N08TS    | TO-263     | Single        | N    | NO  | 80       | ±20          | 90             | 3            | 8.5          | /             | 6495      | 270       | 220       |
| WMK80N08TS    | TO-220     | Single        | N    | NO  | 80       | ±20          | 80             | 3            | 12           | /             | 3980      | 262       | 158       |
| WMO80N08TS    | TO-252     | Single        | N    | NO  | 80       | ±20          | 80             | 3            | 12           | /             | 3980      | 262       | 158       |
| WMM80N08TS    | TO-263     | Single        | N    | NO  | 80       | ±20          | 80             | 3            | 12           | /             | 4150      | 220       | 157       |
| WMLL029NV8HGS | TOLL       | Single        | N    | NO  | 85       | ±20          | 240            | 3            | 3            | /             | 8490      | 1400      | 83        |
| WMS08N10T1    | SOP-8L     | Single        | N    | NO  | 100      | ±20          | 8              | 1.8          | 25           | 28            | 3208      | 106       | 81        |
| WMK25N10T1    | TO-220     | Single        | N    | NO  | 100      | ±20          | 25             | 1.9          | 45           | 55            | 2332      | 61.5      | 50        |
| WMO25N10T1    | TO-252     | Single        | N    | NO  | 100      | ±20          | 25             | 1.9          | 45           | 55            | 2332      | 61.5      | 50        |
| WMS04N10T1    | SOP-8L     | Single        | N    | NO  | 100      | ±20          | 4              | 1.9          | 90           | 105           | 1100      | 55        | 40        |
| WMO15N10T1    | TO-252     | Single        | N    | NO  | 100      | ±20          | 14.6           | 1.9          | 90           | 105           | 1220      | 53        | 42        |
| WMT05N10T1    | SOT-223    | Single        | N    | NO  | 100      | ±20          | 5              | 2            | 100          | 110           | 1061      | 55        | 40        |
| WMQ10N10TS    | PDFN3*3-8L | Single        | N    | NO  | 100      | ±20          | 10             | 2            | 90           | 105           | 1133      | 32        | 26        |
| WMT07N10TS    | SOT-223    | Single        | N    | NO  | 100      | ±20          | 6.8            | 1.5          | 88           | 96            | 1221      | 56        | 30        |



**20V-250V Trench N Channel Power MOSFET**

| Part No.   | Package | Configura<br>tion | Type | ESD | V <sub>DS</sub><br>V | V <sub>GS</sub> Max<br>V | I <sub>B</sub> at 25<br>°C<br>A(Max.) | V <sub>GS</sub> (th) | R <sub>DS</sub> (on) |                       | Ciss<br>pF<br>(Typ.) | Coss<br>pF<br>(Typ.) | Crss<br>pF<br>(Typ.) |
|------------|---------|-------------------|------|-----|----------------------|--------------------------|---------------------------------------|----------------------|----------------------|-----------------------|----------------------|----------------------|----------------------|
|            |         |                   |      |     |                      |                          |                                       | Typ.                 | V <sub>GS</sub> =10V | V <sub>GS</sub> =4.5V |                      |                      |                      |
|            |         |                   |      |     |                      |                          |                                       | V                    | mΩ<br>(Max.)         | mΩ<br>(Max.)          |                      |                      |                      |
| WMK16N10T1 | TO-220  | Single            | N    | NO  | 100                  | ±20                      | 15.8                                  | 1.9                  | 90                   | 105                   | 1100                 | 55                   | 40                   |
| WMO13N10TS | TO-252  | Single            | N    | NO  | 100                  | ±20                      | 13                                    | 1.7                  | 130                  | 160                   | 365                  | 35                   | 7                    |
| WMS04N10TS | SOP-8L  | Single            | N    | NO  | 100                  | ±20                      | 3.7                                   | 1.7                  | 130                  | 160                   | 365                  | 35                   | 7                    |
| WMT04N10TS | SOT-223 | Single            | N    | NO  | 100                  | ±20                      | 3.7                                   | 1.7                  | 130                  | 160                   | 365                  | 35                   | 7                    |
| WMO09N10T1 | TO-252  | Single            | N    | NO  | 100                  | ±20                      | 9                                     | 1.7                  | 160                  | 170                   | 1077                 | 46                   | 32                   |
| WMO15N12TS | TO-252  | Single            | N    | NO  | 120                  | ±20                      | 15                                    | 1.9                  | 140                  | 165                   | 1211                 | 55                   | 31                   |
| WMT05N12TS | SOT-223 | Single            | N    | NO  | 120                  | ±20                      | 5                                     | 1.9                  | 80                   | 105                   | 2021                 | 88                   | 62                   |
| WMO28N15T2 | TO-252  | Single            | N    | NO  | 150                  | ±20                      | 28                                    | 3.2                  | 48                   | /                     | 512                  | 75                   | 11                   |
| WMK28N15T2 | TO-220  | Single            | N    | NO  | 150                  | ±20                      | 28                                    | 3.2                  | 48                   | /                     | 512                  | 75                   | 11                   |
| WMS06N15T2 | SOP-8L  | Single            | N    | NO  | 150                  | ±20                      | 5.8                                   | 3.1                  | 50                   | /                     | 518                  | 75                   | 13                   |
| WMO20N15T2 | TO-252  | Single            | N    | NO  | 150                  | ±20                      | 20                                    | 2                    | 70                   | 88                    | 605                  | 45.5                 | 3                    |
| WMT04N15T1 | SOT-223 | Single            | N    | NO  | 150                  | ±20                      | 4                                     | 2                    | 160                  | /                     | 1130                 | 53                   | 37                   |
| WMO15N15T1 | TO-252  | Single            | N    | NO  | 150                  | ±20                      | 15                                    | 2                    | 170                  | /                     | 1130                 | 53                   | 37                   |
| WMO09N15T1 | TO-252  | Single            | N    | NO  | 150                  | ±20                      | 8.6                                   | 2                    | 325                  | /                     | 223                  | 23                   | 14                   |
| WMO18N20T2 | TO-252  | Single            | N    | NO  | 200                  | ±20                      | 18                                    | 2                    | 130                  | 150                   | 534                  | 30                   | 7                    |
| WMO18N20T1 | TO-252  | Single            | N    | NO  | 200                  | ±20                      | 18                                    | 1.8                  | 170                  | 180                   | 2370                 | 95                   | 65                   |
| WML15N25T2 | TO-220F | Single            | N    | NO  | 250                  | ±20                      | 15                                    | 2                    | 238                  | 270                   | 525                  | 35                   | 6.2                  |
| WMO15N25T2 | TO-252  | Single            | N    | NO  | 250                  | ±20                      | 15                                    | 2                    | 238                  | 270                   | 496                  | 21                   | 6.2                  |

**30V-250V SGT N Channel Power MOSFET**

| Part No.     | Package    | Configura<br>tion | Type | ESD | V <sub>DS</sub><br>V | V <sub>GS</sub> Max<br>V | I <sub>B</sub> at 25<br>°C<br>A(Max.) | V <sub>GS</sub> (th) | R <sub>DS</sub> (on) |                       | Ciss<br>pF<br>(Typ.) | Coss<br>pF<br>(Typ.) | Crss<br>pF<br>(Typ.) |
|--------------|------------|-------------------|------|-----|----------------------|--------------------------|---------------------------------------|----------------------|----------------------|-----------------------|----------------------|----------------------|----------------------|
|              |            |                   |      |     |                      |                          |                                       | Typ.                 | V <sub>GS</sub> =10V | V <sub>GS</sub> =4.5V |                      |                      |                      |
|              |            |                   |      |     |                      |                          |                                       | V                    | mΩ<br>(Max.)         | mΩ<br>(Max.)          |                      |                      |                      |
| WMB017N03LG2 | PDFN5*6-8L | Single            | N    | NO  | 30                   | ±20                      | 100                                   | 1.6                  | 1.7                  | 2.5                   | 3500                 | 1800                 | 240                  |
| WMQ023N03LG2 | PDFN3*3-8L | Single            | N    | NO  | 30                   | ±20                      | 75                                    | 1.7                  | 3                    | 4.5                   | 2670                 | 1480                 | 158                  |
| WMB023N03LG2 | PDFN5*6-8L | Single            | N    | NO  | 30                   | ±20                      | 83                                    | 1.7                  | 2.3                  | 3.6                   | 2670                 | 1480                 | 158                  |

### 30V-250V SGT N Channel Power MOSFET

| Part No.     | Package    | Configura<br>tion | Type | ESD | $V_{DS}$ | $V_{GS}$ Max | $I_b$ at 25<br>°C | $V_{GS}(th)$ | $R_{DS}(on)$ |               | $C_{iss}$    | $C_{oss}$    | $Cr_{ss}$    |
|--------------|------------|-------------------|------|-----|----------|--------------|-------------------|--------------|--------------|---------------|--------------|--------------|--------------|
|              |            |                   |      |     | V        | V            | A(Max.)           | Typ.         | $V_{GS}=10V$ | $V_{GS}=4.5V$ |              |              |              |
|              |            |                   |      |     | V        | V            | A(Max.)           | V            | mΩ<br>(Max.) | mΩ<br>(Max.)  | pF<br>(Typ.) | pF<br>(Typ.) | pF<br>(Typ.) |
| WMQ040N03LG2 | PDFN3*3-8L | Single            | N    | NO  | 30       | ±20          | 43                | 1.6          | 4            | 6.2           | 1390         | 680          | 53           |
| WMB040N03LG2 | PDFN5*6-8L | Single            | N    | NO  | 30       | ±20          | 58                | 1.6          | 4            | 6.2           | 1390         | 680          | 53           |
| WMQ052N03LG2 | PDFN3*3-8L | Single            | N    | NO  | 30       | ±20          | 31                | 1.8          | 5.2          | 8.5           | 1035         | 575          | 41           |
| WMB052N03LG2 | PDFN5*6-8L | Single            | N    | NO  | 30       | ±20          | 50                | 1.8          | 5.2          | 8.2           | 1035         | 575          | 41           |
| WMQ30N03T2   | PDFN3*3-8L | Single            | N    | NO  | 30       | ±20          | 30                | 1.8          | 6.3          | 9             | 770          | 398          | 62           |
| WMB52N03T2   | PDFN5*6-8L | Single            | N    | NO  | 30       | ±20          | 52                | 1.7          | 6.3          | 9             | 850          | 400          | 60           |
| WMQ080N03LG2 | PDFN3*3-8L | Single            | N    | NO  | 30       | ±20          | 28                | 1.7          | 8            | 12            | 690          | 335          | 32           |
| WMB080N03LG2 | PDFN5*6-8L | Single            | N    | NO  | 30       | ±20          | 42                | 1.7          | 8            | 12            | 690          | 335          | 32           |
| WMQ098N03LG2 | PDFN3*3-8L | Single            | N    | NO  | 30       | ±20          | 26                | 1.7          | 9.8          | 15.6          | 570          | 250          | 27.5         |
| WMB098N03LG2 | PDFN5*6-8L | Single            | N    | NO  | 30       | ±20          | 38                | 1.7          | 9.8          | 15.6          | 570          | 250          | 27.5         |
| WMB018N04LG2 | PDFN5*6-8L | Single            | N    | NO  | 40       | ±20          | 130               | 1.7          | 1.8          | 2.6           | 3570         | 1050         | 115          |
| WMS032N04LG2 | SOP-8L     | Single            | N    | NO  | 40       | ±20          | 22                | 1.85         | 3.2          | 5.2           | 2700         | 1050         | 45           |
| WMQ032N04LG2 | PDFN3*3-8L | Single            | N    | NO  | 40       | ±20          | 70                | 1.7          | 3.4          | 5.5           | 2705         | 960          | 55           |
| WMB032N04LG2 | PDFN5*6-8L | Single            | N    | NO  | 40       | ±20          | 90                | 1.7          | 3.2          | 5.2           | 2705         | 960          | 55           |
| WMQ050N04LG2 | PDFN3*3-8L | Single            | N    | NO  | 40       | ±20          | 60                | 1.6          | 5            | 8             | 2111         | 708          | 50           |
| WMQ090N04LG2 | PDFN3*3-8L | Single            | N    | NO  | 40       | ±20          | 40                | 1.6          | 9            | 15            | 830          | 247          | 32           |
| WMB090N04LG2 | PDFN5*6-8L | Single            | N    | NO  | 40       | ±20          | 50                | 1.6          | 9            | 15            | 788          | 305          | 62           |
| WMS090N04LG2 | SOP-8L     | Single            | N    | NO  | 40       | ±20          | 14                | 1.6          | 9            | 15            | 830          | 247          | 41           |
| WMB025N06LG2 | PDFN5*6-8L | Single            | N    | NO  | 60       | ±20          | 158               | 1.6          | 2.8          | 3.8           | 6105         | 1128         | 75           |
| WMK025N06LG2 | TO-220     | Single            | N    | NO  | 60       | ±20          | 200               | 1.6          | 2.8          | 3.8           | 6105         | 1128         | 75           |
| WMB025N06HG2 | PDFN5*6-8L | Single            | N    | NO  | 60       | ±20          | 160               | 3            | 3.2          | /             | 4683         | 1192         | 69           |
| WML025N06HG2 | TO-220F    | Single            | N    | NO  | 60       | ±20          | 180               | 3            | 3.2          | /             | 4683         | 1192         | 69           |
| WMK025N06HG2 | TO-220     | Single            | N    | NO  | 60       | ±20          | 200               | 3            | 3.2          | /             | 4683         | 1192         | 69           |
| WMM025N06HG2 | TO-263     | Single            | N    | NO  | 60       | ±20          | 200               | 3            | 3.2          | /             | 4360         | 1075         | 32           |
| WMU25N06HG2  | TO-220F-NL | Single            | N    | NO  | 60       | ±20          | 180               | 3            | 3.2          | /             | 4683         | 1192         | 89           |
| WMB034N06LG4 | PDFN5*6-8L | Single            | N    | NO  | 60       | ±20          | 125               | 1.7          | 3            | 4             | 4550         | 905          | 55           |



**30V-250V SGT N Channel Power MOSFET**

| Part No.     | Package    | Configura<br>tion | Type | ESD | V <sub>DS</sub> | V <sub>GS</sub> Max | I <sub>D</sub> at 25<br>°C | V <sub>GS</sub> (th) | R <sub>DS(on)</sub>  |                       | Ciss         | Coss         | Crss         |
|--------------|------------|-------------------|------|-----|-----------------|---------------------|----------------------------|----------------------|----------------------|-----------------------|--------------|--------------|--------------|
|              |            |                   |      |     | V               | V                   | A(Max.)                    | Typ.                 | V <sub>GS</sub> =10V | V <sub>GS</sub> =4.5V |              |              |              |
|              |            |                   |      |     |                 |                     |                            | V                    | mΩ<br>(Max.)         | mΩ<br>(Max.)          | pF<br>(Typ.) | pF<br>(Typ.) | pF<br>(Typ.) |
| WMK030N06LG4 | TO-220     | Single            | N    | NO  | 60              | ±20                 | 125                        | 1.7                  | 3                    | 4                     | 4550         | 905          | 55           |
| WMO030N06LG4 | TO-252     | Single            | N    | NO  | 60              | ±20                 | 125                        | 1.7                  | 3.2                  | 4.2                   | 4550         | 905          | 50           |
| WMB034N06HG4 | PDFN5*6-8L | Single            | N    | NO  | 60              | ±20                 | 125                        | 3                    | 3.2                  | /                     | 5211         | 1124         | 50           |
| WMK030N06HG4 | TO-220     | Single            | N    | NO  | 60              | ±20                 | 125                        | 3                    | 3.2                  | /                     | 5211         | 1124         | 50           |
| WMM030N06HG4 | TO-263     | Single            | N    | NO  | 60              | ±20                 | 125                        | 3                    | 3.2                  | /                     | 5211         | 1124         | 50           |
| WMO030N06HG4 | TO-252     | Single            | N    | NO  | 60              | ±20                 | 125                        | 3                    | 3.4                  | /                     | 5211         | 1124         | 50           |
| WMB060N06LG2 | PDFN5*6-8L | Single            | N    | NO  | 60              | ±20                 | 75                         | 1.7                  | 6                    | 7                     | 2100         | 450          | 8            |
| WMQ060N06LG2 | PDFN3*3-8L | Single            | N    | NO  | 60              | ±20                 | 65                         | 1.7                  | 6                    | 7                     | 2100         | 450          | 8            |
| WMS060N06LG2 | SOP-8L     | Single            | N    | NO  | 60              | ±20                 | 16                         | 1.7                  | 6                    | 7                     | 2100         | 450          | 8            |
| WMO060N06LG2 | TO-252     | Single            | N    | NO  | 60              | ±20                 | 85                         | 1.6                  | 6                    | 7                     | 2100         | 450          | 8            |
| WMQ076N06LG2 | PDFN3*3-8L | Single            | N    | NO  | 60              | ±20                 | 60                         | 1.6                  | 7.6                  | 11.8                  | 1965         | 400          | 17.5         |
| WMB076N06LG2 | PDFN5*6-8L | Single            | N    | NO  | 60              | ±20                 | 70                         | 1.6                  | 7.6                  | 11.8                  | 1965         | 400          | 17.5         |
| WMO076N06LG2 | TO-252     | Single            | N    | NO  | 60              | ±20                 | 80                         | 1.6                  | 7.6                  | 11.8                  | 1965         | 400          | 17.5         |
| WMS076N06LG2 | SOP-8L     | Single            | N    | NO  | 60              | ±20                 | 15                         | 1.6                  | 7.6                  | 11.8                  | 1965         | 400          | 17.5         |
| WMS098N06LG2 | SOP-8L     | Single            | N    | NO  | 60              | ±20                 | 13.7                       | 1.7                  | 9.8                  | 15                    | 937          | 428          | 31           |
| WMQ098N06LG2 | PDFN3*3-8L | Single            | N    | NO  | 60              | ±20                 | 42                         | 1.7                  | 9.8                  | 15                    | 937          | 428          | 31           |
| WMB098N06LG2 | PDFN5*6-8L | Single            | N    | NO  | 60              | ±20                 | 57                         | 1.8                  | 9.8                  | 15                    | 937          | 428          | 31           |
| WMS048NV6LG2 | SOP-8L     | Single            | N    | NO  | 65              | ±20                 | 17.5                       | 1.6                  | 5.5                  | 7.6                   | 1900         | 785          | 50           |
| WMQ048NV6LG2 | PDFN3*3-8L | Single            | N    | NO  | 65              | ±20                 | 60                         | 1.6                  | 5.6                  | 7.6                   | 1995         | 785          | 51           |
| WMB048NV6LG2 | PDFN5*6-8L | Single            | N    | NO  | 65              | ±20                 | 95                         | 1.6                  | 5.2                  | 7.6                   | 1995         | 785          | 51           |
| WMQ048NV6HG2 | PDFN3*3-8L | Single            | N    | NO  | 65              | ±20                 | 60                         | 3                    | 5                    | /                     | 2068         | 934          | 45           |
| WMO048NV6LG2 | TO-252     | Single            | N    | NO  | 65              | ±20                 | 90                         | 1.6                  | 5                    | 7.3                   | 2005         | 785          | 51           |
| WMS048NV6HG2 | SOP-8L     | Single            | N    | NO  | 65              | ±20                 | 17.5                       | 3                    | 5                    | /                     | 2068         | 934          | 45           |
| WMB048NV6HG2 | PDFN5*6-8L | Single            | N    | NO  | 65              | ±20                 | 95                         | 3                    | 5.2                  | /                     | 2268         | 1034         | 45           |
| WMM050NV6HG2 | TO-263     | Single            | N    | NO  | 65              | ±20                 | 150                        | 3                    | 5                    | /                     | 2368         | 1034         | 45           |
| WMS090NV6LG2 | SOP-8L     | Single            | N    | NO  | 65              | ±20                 | 14.5                       | 1.7                  | 9                    | 14                    | 1208         | 562          | 25           |

### 30V-250V SGT N Channel Power MOSFET

| Part No.      | Package    | Configura<br>tion | Type | ESD | $V_{DS}$ | $V_{GS}$ Max | $I_b$ at 25<br>°C | $V_{GS}(th)$ | $R_{DS}(on)$ |               | Ciss         | Coss         | Crss         |
|---------------|------------|-------------------|------|-----|----------|--------------|-------------------|--------------|--------------|---------------|--------------|--------------|--------------|
|               |            |                   |      |     | V        | V            | A(Max.)           | Typ.         | $V_{GS}=10V$ | $V_{GS}=4.5V$ |              |              |              |
|               |            |                   |      |     | V        | V            | A(Max.)           | V            | mΩ<br>(Max.) | mΩ<br>(Max.)  | pF<br>(Typ.) | pF<br>(Typ.) | pF<br>(Typ.) |
| WMMQ090NV6LG2 | PDFN3*3-8L | Single            | N    | NO  | 65       | ±20          | 45                | 1.8          | 9            | 13.5          | 1223         | 490          | 22           |
| WMB090NV6LG2  | PDFN5*6-8L | Single            | N    | NO  | 65       | ±20          | 62                | 1.7          | 9            | 13            | 1223         | 490          | 22           |
| WMMK040N08HGS | TO-220     | Single            | N    | NO  | 80       | ±20          | 180               | 3            | 4.8          | /             | 5235         | 985          | 58           |
| WMM040N08HGS  | TO-263     | Single            | N    | NO  | 80       | ±20          | 180               | 3            | 4.8          | /             | 5235         | 985          | 58           |
| WMB040N08HGS  | PDFN5*6-8L | Single            | N    | NO  | 80       | ±20          | 130               | 3            | 4            | /             | 5235         | 985          | 58           |
| WMMQ060N08LG2 | PDFN3*3-8L | Single            | N    | NO  | 80       | ±20          | 58                | 1.8          | 6.8          | 10.5          | 2426         | 437          | 16           |
| WMB060N08LG2  | PDFN5*6-8L | Single            | N    | NO  | 80       | ±20          | 98                | 1.8          | 6            | 8.2           | 2155         | 482          | 23           |
| WMM053NV8HGS  | TO-263     | Single            | N    | NO  | 85       | ±20          | 125               | 3            | 5.5          | /             | 4021         | 750          | 32           |
| WMMK053NV8HGS | TO-220     | Single            | N    | NO  | 85       | ±20          | 125               | 3            | 5.5          | /             | 4645         | 673          | 41           |
| WMB053NV8HGS  | PDFN5*6-8L | Single            | N    | NO  | 85       | ±20          | 100               | 3            | 5.6          | /             | 4645         | 673          | 41           |
| WMM053NV8HGS  | TO-252     | Single            | N    | NO  | 85       | ±20          | 118               | 3            | 6.2          | /             | 4645         | 673          | 41           |
| WMMK028N10HG2 | TO-220     | Single            | N    | NO  | 100      | ±20          | 245               | 3            | 2.8          | /             | 7735         | 1190         | 25           |
| WMM028N10HG2  | TO-263     | Single            | N    | NO  | 100      | ±20          | 245               | 3            | 2.8          | /             | 7735         | 1190         | 25           |
| WMM028N10HGD  | TO-263     | Single            | N    | NO  | 100      | ±20          | 230               | 3            | 3            | /             | 8998         | 1300         | 42           |
| WMMK028N10HGD | TO-220     | Single            | N    | NO  | 100      | ±20          | 230               | 3            | 3            | /             | 8998         | 1300         | 42           |
| WMM043N10HGD  | TO-263     | Single            | N    | NO  | 100      | ±20          | 166               | 3            | 4.3          | /             | 4236         | 854          | 33           |
| WMMK043N10HGD | TO-220     | Single            | N    | NO  | 100      | ±20          | 166               | 3            | 4.3          | /             | 4236         | 854          | 33           |
| WMB043N10LGS  | PDFN5*6-8L | Single            | N    | NO  | 100      | ±20          | 120               | 1.8          | 4.5          | 6.7           | 5475         | 768          | 22           |
| WMMK043N10LGS | TO-220     | Single            | N    | NO  | 100      | ±20          | 120               | 1.8          | 4.5          | 6.7           | 6095         | 722          | 17           |
| WMB043N10HGS  | PDFN5*6-8L | Single            | N    | NO  | 100      | ±20          | 120               | 3            | 5            | /             | 6865         | 740          | 21           |
| WMMK043N10HGS | TO-220     | Single            | N    | NO  | 100      | ±20          | 145               | 3            | 5            | /             | 6865         | 740          | 21           |
| WMM043N10HGS  | TO-263     | Single            | N    | NO  | 100      | ±20          | 145               | 3            | 5            | /             | 6868         | 740          | 21           |
| WMM053N10HGD  | TO-263     | Single            | N    | NO  | 100      | ±20          | 145               | 3            | 5.5          | /             | 4050         | 1400         | 72           |
| WMMK053N10HGD | TO-220     | Single            | N    | NO  | 100      | ±20          | 145               | 3            | 5.5          | /             | 4050         | 1400         | 72           |
| WMB060N10LGS  | PDFN5*6-8L | Single            | N    | NO  | 100      | ±20          | 95                | 1.8          | 6            | 9             | 4400         | 645          | 20           |
| WMMK060N10LGS | TO-220     | Single            | N    | NO  | 100      | ±20          | 120               | 1.8          | 6            | 9             | 4400         | 645          | 20           |



**30V-250V SGT N Channel Power MOSFET**

| Part No.     | Package    | Configura<br>tion | Type | ESD | V <sub>DS</sub> | V <sub>GS</sub> Max | I <sub>D</sub> at 25<br>°C | V <sub>GS</sub> (th) | R <sub>DS(on)</sub>  |                       | Ciss         | Coss         | Crss         |
|--------------|------------|-------------------|------|-----|-----------------|---------------------|----------------------------|----------------------|----------------------|-----------------------|--------------|--------------|--------------|
|              |            |                   |      |     | V               | V                   | A(Max.)                    | V                    | V <sub>GS</sub> =10V | V <sub>GS</sub> =4.5V |              |              |              |
|              |            |                   |      |     |                 |                     |                            | Typ.                 | mΩ<br>(Max.)         | mΩ<br>(Max.)          | pF<br>(Typ.) | pF<br>(Typ.) | pF<br>(Typ.) |
| WMB060N10HGS | PDFN5*6-8L | Single            | N    | NO  | 100             | ±20                 | 95                         | 3                    | 6                    | /                     | 4350         | 628          | 19           |
| WMK060N10HGS | TO-220     | Single            | N    | NO  | 100             | ±20                 | 120                        | 3                    | 6                    | /                     | 4350         | 628          | 19           |
| WMM060N10HGS | TO-263     | Single            | N    | NO  | 100             | ±20                 | 120                        | 3                    | 6                    | /                     | 4350         | 628          | 19           |
| WMB080N10LG2 | PDFN5*6-8L | Single            | N    | NO  | 100             | ±20                 | 74                         | 1.8                  | 8                    | 11                    | 1920         | 359          | 9.7          |
| WMK080N10LG2 | TO-220     | Single            | N    | NO  | 100             | ±20                 | 82                         | 1.8                  | 8                    | 11                    | 1920         | 359          | 9.7          |
| WMS080N10LG2 | SOP-8L     | Single            | N    | NO  | 100             | ±20                 | 15                         | 1.8                  | 9.2                  | 12                    | 1915         | 350          | 9.2          |
| WMB080N10HG2 | PDFN5*6-8L | Single            | N    | NO  | 100             | ±20                 | 74                         | 3                    | 8                    | /                     | 2250         | 370          | 8.5          |
| WMO080N10HG2 | TO-252     | Single            | N    | NO  | 100             | ±20                 | 85                         | 3                    | 8                    | /                     | 1920         | 395          | 8            |
| WML080N10HG2 | TO-220F    | Single            | N    | NO  | 100             | ±20                 | 42                         | 3                    | 8.8                  | /                     | 1965         | 385          | 9            |
| WMU080N10HG2 | TO-220F-NL | Single            | N    | NO  | 100             | ±20                 | 42                         | 2.8                  | 8.8                  | /                     | 1740         | 395          | 7.5          |
| WMQ099N10LG2 | PDFN3*3-8L | Single            | N    | NO  | 100             | ±20                 | 47                         | 1.8                  | 11                   | 14                    | 1620         | 300          | 5.5          |
| WMB099N10LGS | PDFN5*6-8L | Single            | N    | NO  | 100             | ±20                 | 70                         | 1.8                  | 9.9                  | 14                    | 3345         | 285          | 19           |
| WMO099N10LGS | TO-252     | Single            | N    | NO  | 100             | ±20                 | 70                         | 1.8                  | 9.9                  | 14                    | 3345         | 285          | 19           |
| WMK099N10LGS | TO-220     | Single            | N    | NO  | 100             | ±20                 | 75                         | 1.8                  | 9.9                  | 14                    | 3345         | 285          | 19           |
| WMB099N10HGS | PDFN5*6-8L | Single            | N    | NO  | 100             | ±20                 | 68                         | 3                    | 9.9                  | /                     | 3520         | 300          | 20           |
| WMO099N10HGS | TO-252     | Single            | N    | NO  | 100             | ±20                 | 68                         | 3                    | 9.9                  | /                     | 3520         | 300          | 20           |
| WMK099N10HGS | TO-220     | Single            | N    | NO  | 100             | ±20                 | 72                         | 3                    | 9.9                  | /                     | 3520         | 300          | 20           |
| WML099N10HGS | TO-220F    | Single            | N    | NO  | 100             | ±20                 | 37                         | 3                    | 9.9                  | /                     | 3520         | 300          | 20           |
| WMS119N10LG2 | SOP-8L     | Single            | N    | NO  | 100             | ±20                 | 11.5                       | 1.8                  | 13                   | 17.5                  | 1170         | 210          | 6.5          |
| WMQ119N10LG2 | PDFN3*3-8L | Single            | N    | NO  | 100             | ±20                 | 42                         | 1.8                  | 13                   | 17.5                  | 1170         | 210          | 6.5          |
| WMB119N10LG2 | PDFN5*6-8L | Single            | N    | NO  | 100             | ±20                 | 50                         | 1.8                  | 13                   | 17.5                  | 1170         | 210          | 6.5          |
| WMP119N10LG2 | TO-251     | Single            | N    | NO  | 100             | ±20                 | 55                         | 1.8                  | 13                   | 17.5                  | 1170         | 210          | 6.5          |
| WMS175N10LG2 | SOP-8L     | Single            | N    | NO  | 100             | ±20                 | 10                         | 1.8                  | 18.5                 | 26                    | 868          | 172          | 6            |
| WMQ175N10LG2 | PDFN3*3-8L | Single            | N    | NO  | 100             | ±20                 | 30                         | 1.8                  | 17                   | 24                    | 1190         | 303          | 9.1          |
| WMB175N10LG2 | PDFN5*6-8L | Single            | N    | NO  | 100             | ±20                 | 44                         | 1.8                  | 17                   | 24                    | 1190         | 303          | 9.1          |
| WMO175N10LG2 | TO-252     | Single            | N    | NO  | 100             | ±20                 | 44                         | 1.7                  | 17.5                 | 25                    | 1170         | 355          | 11           |

### 30V-250V SGT N Channel Power MOSFET

| Part No.     | Package    | Configura<br>tion | Type | ESD | $V_{DS}$ | $V_{GS}$ Max | $I_b$ at 25<br>°C | $V_{GS}(th)$ | $R_{DS}(on)$ |               | Ciss         | Coss         | Crss         |
|--------------|------------|-------------------|------|-----|----------|--------------|-------------------|--------------|--------------|---------------|--------------|--------------|--------------|
|              |            |                   |      |     | V        | V            | A(Max.)           | Typ.         | $V_{GS}=10V$ | $V_{GS}=4.5V$ |              |              |              |
|              |            |                   |      |     | V        | V            | A(Max.)           | V            | mΩ<br>(Max.) | mΩ<br>(Max.)  | pF<br>(Typ.) | pF<br>(Typ.) | pF<br>(Typ.) |
| WMK175N10LG2 | TO-220     | Single            | N    | NO  | 100      | ±20          | 44                | 1.7          | 17.5         | 25            | 1140         | 430          | 10.5         |
| WMB175N10HG2 | PDFN5*6-8L | Single            | N    | NO  | 100      | ±20          | 44                | 3            | 17.5         | /             | 1175         | 355          | 11           |
| WMO175N10HG2 | TO-252     | Single            | N    | NO  | 100      | ±20          | 44                | 3            | 17.5         | /             | 1175         | 355          | 11           |
| WMK175N10HG2 | TO-220     | Single            | N    | NO  | 100      | ±20          | 44                | 3            | 17.5         | /             | 1175         | 355          | 11           |
| WMK049N12HG2 | TO-220     | Single            | N    | NO  | 120      | ±20          | 170               | 3            | 4.9          | /             | 5150         | 595          | 19           |
| WMM049N12HG2 | TO-263     | Single            | N    | NO  | 120      | ±20          | 170               | 3            | 4.9          | /             | 5150         | 595          | 19           |
| WMB049N12HG2 | PDFN5*6-8L | Single            | N    | NO  | 120      | ±20          | 180               | 3            | 4.9          | /             | 4345         | 493          | 20           |
| WMK058N12HG2 | TO-220     | Single            | N    | NO  | 120      | ±20          | 160               | 3            | 5.8          | /             | 4300         | 525          | 11           |
| WMM058N12HG2 | TO-263     | Single            | N    | NO  | 120      | ±20          | 160               | 3            | 5.8          | /             | 7725         | 448          | 15.8         |
| WMB072N12LG2 | PDFN5*6-8L | Single            | N    | NO  | 120      | ±20          | 90                | 1.95         | 7.2          | 10            | 3750         | 471          | 12           |
| WMK072N12LG2 | TO-220     | Single            | N    | NO  | 120      | ±20          | 125               | 1.95         | 7.2          | 10            | 3750         | 985          | 21           |
| WMB072N12HG2 | PDFN5*6-8L | Single            | N    | NO  | 120      | ±20          | 125               | 3            | 7.2          | /             | 3600         | 530          | 19           |
| WMK072N12HG2 | TO-220     | Single            | N    | NO  | 120      | ±20          | 125               | 3            | 7.2          | /             | 3600         | 530          | 19           |
| WMB125N12LG2 | PDFN5*6-8L | Single            | N    | NO  | 120      | ±20          | 61                | 2            | 12.5         | 17            | 2350         | 285          | 15           |
| WMK125N12LG2 | TO-220     | Single            | N    | NO  | 120      | ±20          | 74                | 2            | 12.5         | 17            | 2075         | 235          | 9            |
| WML125N12LG2 | TO-220F    | Single            | N    | NO  | 120      | ±20          | 35                | 2            | 12.5         | 17            | 2075         | 235          | 9            |
| WMK161N15T2  | TO-220     | Single            | N    | NO  | 150      | ±20          | 161               | 3            | 6            | /             | 6220         | 480          | 11           |
| WMM161N15T2  | TO-263     | Single            | N    | NO  | 150      | ±20          | 161               | 3            | 6            | /             | 6220         | 480          | 11           |
| WML071N15HG2 | TO-220F    | Single            | N    | NO  | 150      | ±20          | 120               | 3            | 7.1          | /             | 5270         | 392          | 17           |
| WMK071N15HG2 | TO-220     | Single            | N    | NO  | 150      | ±20          | 135               | 3            | 7.1          | /             | 5470         | 389          | 13           |
| WMM071N15HG2 | TO-263     | Single            | N    | NO  | 150      | ±20          | 135               | 3            | 7.1          | /             | 5470         | 389          | 13           |
| WMB115N15HG2 | PDFN5*6-8L | Single            | N    | NO  | 150      | ±20          | 74                | 3            | 11.5         | /             | 3420         | 262          | 9.2          |
| WMK115N15HG2 | TO-220     | Single            | N    | NO  | 150      | ±20          | 90                | 3            | 11.5         | /             | 3420         | 262          | 9.2          |
| WMM115N15HG2 | TO-263     | Single            | N    | NO  | 150      | ±20          | 90                | 3            | 11.5         | /             | 3520         | 262          | 9.8          |
| WMB198N15HG2 | PDFN5*6-8L | Single            | N    | NO  | 150      | ±20          | 47                | 3            | 19.8         | /             | 2150         | 145          | 12           |
| WMK198N15HG2 | TO-220     | Single            | N    | NO  | 150      | ±20          | 58                | 3            | 19.8         | /             | 2150         | 145          | 12           |





**30V-250V SGT N Channel Power MOSFET**

| Part No.     | Package    | Configura<br>tion | Type | ESD | V <sub>DS</sub> | V <sub>GS</sub> Max | I <sub>B</sub> at 25<br>°C | V <sub>GS(th)</sub> | R <sub>DS(on)</sub>  |                       | Ciss         | Coss         | Crss         |
|--------------|------------|-------------------|------|-----|-----------------|---------------------|----------------------------|---------------------|----------------------|-----------------------|--------------|--------------|--------------|
|              |            |                   |      |     | V               | V                   | A(Max.)                    | V                   | V <sub>GS</sub> =10V | V <sub>GS</sub> =4.5V |              |              |              |
|              |            |                   |      |     |                 |                     |                            |                     | mΩ<br>(Max.)         | mΩ<br>(Max.)          | pF<br>(Typ.) | pF<br>(Typ.) | pF<br>(Typ.) |
| WMS690N15HG2 | SOP-8L     | Single            | N    | NO  | 150             | ±20                 | 5                          | 3                   | 69                   | /                     | 585          | 48           | 2.5          |
| WMB690N15HG2 | PDFN5*6-8L | Single            | N    | NO  | 150             | ±20                 | 20                         | 3                   | 65                   | /                     | 655          | 45.5         | 2.7          |
| WMO690N15HG2 | TO-252     | Single            | N    | NO  | 150             | ±20                 | 20                         | 3                   | 65                   | /                     | 655          | 45.5         | 2.7          |
| WMB340N20HG2 | PDFN5*6-8L | Single            | N    | NO  | 200             | ±20                 | 40                         | 3                   | 34                   | /                     | 1702         | 141          | 8.5          |
| WMK340N20HG2 | TO-220     | Single            | N    | NO  | 200             | ±20                 | 50                         | 3                   | 34                   | /                     | 1712         | 141          | 8            |
| WMM340N20HG2 | TO-263     | Single            | N    | NO  | 200             | ±20                 | 50                         | 3                   | 34                   | /                     | 1712         | 141          | 8            |

**Multi-Channel MOSFET Power MOSFET**

| Part No.      | Package    | Configura<br>tion | Type | ESD | V <sub>DS</sub> | V <sub>GS</sub> Max | I <sub>B</sub> at 25<br>°C | V <sub>GS(th)</sub> | R <sub>DS(on)</sub>  |                       | Ciss         | Coss         | Crss         |
|---------------|------------|-------------------|------|-----|-----------------|---------------------|----------------------------|---------------------|----------------------|-----------------------|--------------|--------------|--------------|
|               |            |                   |      |     | V               | V                   | A(Max.)                    | V                   | V <sub>GS</sub> =10V | V <sub>GS</sub> =4.5V |              |              |              |
|               |            |                   |      |     |                 |                     |                            |                     | mΩ<br>(Max.)         | mΩ<br>(Max.)          | pF<br>(Typ.) | pF<br>(Typ.) | pF<br>(Typ.) |
| WM02DN560Q    | DFN3*3-8L  | Dual-N            | N    | YES | 20              | ±12                 | 20                         | 0.55                | /                    | 5.8                   | 3165         | 380          | 325          |
| WM02DN095C    | DFN2*3-6L  | Dual-N            | N    | YES | 20              | ±12                 | 9.5                        | 0.62                | /                    | 7.4                   | 1647         | 170          | 148          |
| WM02DN110C    | DFN2*3-6L  | Dual-N            | N    | YES | 20              | ±12                 | 11                         | 0.62                | /                    | 7.5                   | 1767         | 184          | 155          |
| WM02DN085C    | DFN2*3-6L  | Dual-N            | N    | YES | 20              | ±12                 | 8.5                        | 0.62                | /                    | 8.2                   | 1612         | 162          | 140          |
| WM02DN080C    | DFN2*3-6L  | Dual-N            | N    | YES | 20              | ±12                 | 8                          | 0.62                | /                    | 13                    | 730          | 85           | 75           |
| WM4C62160A    | CSP1.5*1.5 | Dual-N            | N    | YES | 20              | ±12                 | 5                          | 0.85                | /                    | 22                    | 655          | 45.5         | 2.7          |
| WMS09DP03T1   | SOP-8L     | Dual-P            | P    | NO  | -30             | ±20                 | -9                         | -1.7                | 17                   | 25                    | 2710         | 331          | 279          |
| WMS098DN06LG2 | SOP-8L     | Dual-N            | N    | NO  | 60              | ±20                 | 13                         | 1.7                 | 12                   | 16.5                  | 1055         | 422          | 21           |
| WMB098DN06LG2 | PDFN5*6-8L | Dual-N            | N    | NO  | 60              | ±20                 | 13                         | 1.7                 | 11                   | 16                    | 1055         | 422          | 21           |
| WMQ40DN03T1   | PDFN3*3-8L | Dual-N            | N    | NO  | 30              | ±20                 | 40                         | 1.6                 | 9                    | 14                    | 1390         | 178          | 141          |
| WMS14DN03T1   | SOP-8L     | Dual-N            | N    | NO  | 30              | ±20                 | 14                         | 1.5                 | 9                    | 13                    | 1011         | 170          | 152          |
| WMQ36DN03T1   | PDFN3*3-8L | Dual-N            | N    | NO  | 30              | ±20                 | 36                         | 1.7                 | 12.8                 | 17                    | 825          | 121          | 82           |
| WMB02DN10T1   | PDFN5*6-8L | Dual-N            | N    | NO  | 100             | ±20                 | 2.5                        | 1.7                 | 290                  | 310                   | 395          | 28           | 22           |
| WMS08DN06TS   | SOP-8L     | Dual-N            | N    | NO  | 60              | ±20                 | 8                          | 1.7                 | 38                   | 46                    | 1315         | 57           | 46           |
| WMS10DN03T1   | SOP-8L     | Dual-N            | N    | NO  | 30              | ±20                 | 10                         | 1.8                 | 18                   | 30                    | 500          | 70           | 46           |

### Multi-Channel MOSFET Power MOSFET

| Part No.      | Package    | Configura<br>tion | Type | ESD | $V_{DS}$ | $V_{GS}$ Max | $I_B$ at 25<br>°C | $V_{GS}(th)$ | $R_{DS}(on)$ |               | Ciss         | Coss         | Crss         |
|---------------|------------|-------------------|------|-----|----------|--------------|-------------------|--------------|--------------|---------------|--------------|--------------|--------------|
|               |            |                   |      |     | V        | V            | A(Max.)           | Typ.         | $V_{GS}=10V$ | $V_{GS}=4.5V$ |              |              |              |
|               |            |                   |      |     | V        | V            | A(Max.)           | V            | mΩ<br>(Max.) | mΩ<br>(Max.)  | pF<br>(Typ.) | pF<br>(Typ.) | pF<br>(Typ.) |
| WMB03DN06T1   | PDFN5*6-8L | Dual-N            | N    | NO  | 60       | ±20          | 3.5               | 1.3          | 100          | 110           | 410          | 32           | 25           |
| WMB31430DN    | PDFN5*6-8L | Dual-N            | N    | NO  | 30       | ±20          | 130               | 1.6          | 1.3          | 1.8           | 4877         | 2440         | 248          |
|               |            |                   |      | NO  | 30       | ±20          | 56                | 1.6          | 4.6          | 6.5           | 1552         | 700          | 120          |
| WMB042DN03LG2 | PDFN5*6-8L | Dual-N            | N    | NO  | 30       | ±20          | 50                | 1.7          | 4.2          | 6.5           | 1390         | 680          | 53           |
|               |            |                   |      | NO  | 30       | ±20          | 45                | 1.7          | 5.5          | 9             | 1100         | 430          | 60           |
| WMB190DN10LG2 | PDFN5*6-8L | Dual-N            | N    | NO  | 100      | ±20          | 33                | 1.7          | 19           | 25            | 998          | 370          | 12           |
| WMS08DH04T1   | SOP-8L     | N+P               | N    | NO  | 40       | ±20          | 8                 | 1.5          | 18           | 22.5          | 1090         | 92           | 78           |
|               |            |                   | P    | NO  | -40      | ±20          | -6                | -1.7         | 45           | 58            | 990          | 120          | 90           |

### -60V-100V Small Signal MOSFET

| Part No.  | Package    | Type | ESD | $V_{DS}$ | $V_{GS}$ Max | $I_B$ at 25<br>°C | $V_{GS}(th)$ |         | $R_{DS}(on)$ |              |               |              |               |              |
|-----------|------------|------|-----|----------|--------------|-------------------|--------------|---------|--------------|--------------|---------------|--------------|---------------|--------------|
|           |            |      |     | V        | V            | A(Max.)           | V(Min.)      | V(Max.) | $V_{GS}=10V$ |              | $V_{GS}=4.5V$ |              | $V_{GS}=2.5V$ |              |
|           |            |      |     | V        | V            | A(Max.)           | V(Min.)      | V(Max.) | mΩ<br>(Typ.) | mΩ<br>(Max.) | mΩ<br>(Typ.)  | mΩ<br>(Max.) | mΩ<br>(Typ.)  | mΩ<br>(Max.) |
| WM06P17MR | SOT-23     | P    | NO  | -60      | ±20          | -1.7              | -1           | -2.5    | 175          | 220          | 190           | 270          | /             | /            |
| WM05P01G  | SOT-323    | P    | NO  | -50      | ±20          | -0.13             | -0.8         | -2.5    | 1700         | 6000         | 2000          | 7000         | /             | /            |
| WM05P01M  | SOT-23     | P    | NO  | -50      | ±20          | -0.13             | -0.9         | -2      | 1700         | 6000         | 2000          | 7000         | /             | /            |
| WM05P20M  | SOT-23     | P    | NO  | -50      | ±20          | -2                | -1           | -3      | 130          | 180          | 170           | 250          | /             | /            |
| WM05P02F  | DFN1006-3L | P    | YES | -50      | ±20          | -0.25             | -1           | -2      | 2200         | 6000         | 2600          | 7000         | /             | /            |
| WM04P50M  | SOT-23     | P    | NO  | -40      | ±20          | -5                | -1           | -3      | 64           | 85           | 85            | 125          | /             | /            |
| WM04P56M  | SOT-23     | P    | NO  | -40      | ±20          | -5.6              | -1           | -3      | 42           | 55           | 52            | 65           | /             | /            |
| WM04P56M2 | SOT-23-3L  | P    | NO  | -40      | ±20          | -5.6              | -1           | -3      | 38           | 50           | 48            | 62           | /             | /            |
| WM03P19M  | SOT-23     | P    | NO  | -30      | ±20          | -1.9              | -1           | -3      | 90           | 190          | 135           | 330          | /             | /            |
| WM03P27M  | SOT-23     | P    | NO  | -30      | ±20          | -2.7              | -1           | -3      | 65           | 88           | 100           | 138          | /             | /            |
| WM03P42M  | SOT-23     | P    | NO  | -30      | ±12          | -4.2              | -0.7         | -1.3    | 43           | 60           | 56            | 75           | 72            | 90           |

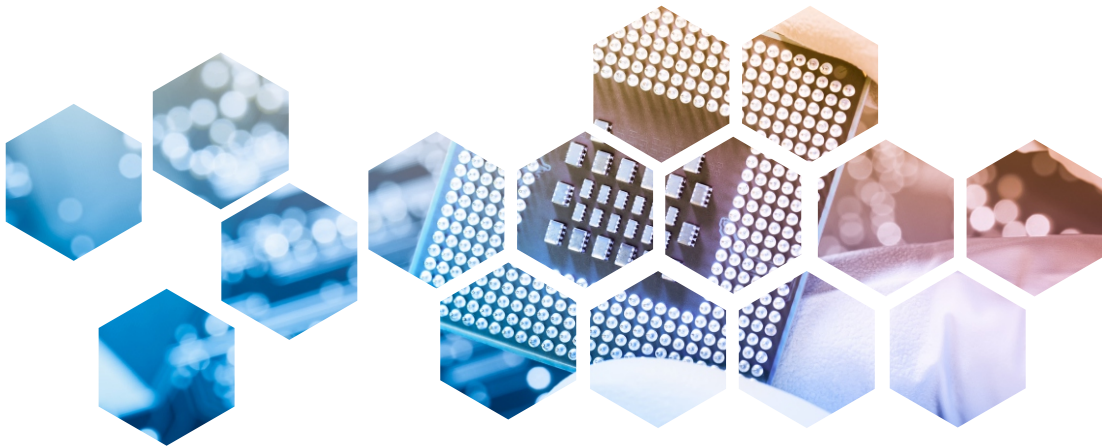


| Part No.  | Package    | Type | ESD | V <sub>bs</sub> | V <sub>es</sub> Max | I <sub>s</sub> at 25 °C | V <sub>gs</sub> (th) |         | R <sub>es</sub> (on) |           |                       |           |                       |           |
|-----------|------------|------|-----|-----------------|---------------------|-------------------------|----------------------|---------|----------------------|-----------|-----------------------|-----------|-----------------------|-----------|
|           |            |      |     |                 |                     |                         |                      |         | V <sub>es</sub> =10V |           | V <sub>es</sub> =4.5V |           | V <sub>es</sub> =2.5V |           |
|           |            |      |     | V               | V                   | A(Max.)                 | V(Min.)              | V(Max.) | mΩ (Typ.)            | mΩ (Max.) | mΩ (Typ.)             | mΩ (Max.) | mΩ (Typ.)             | mΩ (Max.) |
| WM03P42M2 | SOT-23-3L  | P    | NO  | -30             | ±12                 | -4.2                    | -0.7                 | -1.3    | 43                   | 60        | 55                    | 70        | 60                    | 90        |
| WM03P51A  | SOP-8L     | P    | NO  | -30             | ±20                 | -5.1                    | -1                   | -2      | 42                   | 60        | 60                    | 82        | /                     | /         |
| WM03P41M  | SOT-23     | P    | NO  | -30             | ±20                 | -4.1                    | -1                   | -2.5    | 42                   | 60        | 54                    | 85        | /                     | /         |
| WM03P41M2 | SOT-23-3L  | P    | NO  | -30             | ±20                 | -4.1                    | -1                   | -2.5    | 42                   | 60        | 54                    | 85        | /                     | /         |
| WM03P60M2 | SOT-23-3L  | P    | NO  | -30             | ±20                 | -6                      | -1                   | -2      | 30                   | 40        | 40                    | 60        | /                     | /         |
| WM03P56M2 | SOT-23-3L  | P    | NO  | -30             | ±20                 | -5.6                    | -1                   | -3      | 22                   | 35        | 30                    | 45        | /                     | /         |
| WM03P91A  | SOP-8L     | P    | NO  | -30             | ±20                 | -9.1                    | -1                   | -3      | 17                   | 24        | 23                    | 35        | /                     | /         |
| WM02P06F  | DFN1006-3L | P    | YES | -20             | ±10                 | -0.66                   | -0.3                 | -1.1    | /                    | /         | 450                   | 520       | 650                   | 780       |
| WM02P06G  | SOT-323    | P    | YES | -20             | ±12                 | -0.66                   | -0.3                 | -1.1    | /                    | /         | 450                   | 520       | 650                   | 780       |
| WM02P06L  | SOT-523    | P    | YES | -20             | ±10                 | -0.66                   | -0.3                 | -1.1    | /                    | /         | 450                   | 520       | 680                   | 780       |
| WM02P06H  | SOT-723    | P    | YES | -20             | ±10                 | -0.66                   | -0.3                 | -1.1    | /                    | /         | 450                   | 520       | 650                   | 780       |
| WM02P23M  | SOT-23     | P    | NO  | -20             | ±10                 | -2.3                    | -0.4                 | -1.2    | /                    | /         | 90                    | 115       | 115                   | 145       |
| WM02P14G  | SOT-323    | P    | NO  | -20             | ±12                 | -1.4                    | -0.5                 | -1      | /                    | /         | 85                    | 100       | 110                   | 140       |
| WM02P26M  | SOT-23     | P    | NO  | -20             | ±8                  | -2.6                    | -0.4                 | -1      | /                    | /         | 60                    | 90        | 75                    | 130       |
| WM02P30M  | SOT-23     | P    | NO  | -20             | ±12                 | -3                      | -0.4                 | -1      | /                    | /         | 50                    | 70        | 60                    | 90        |
| WM02P41M  | SOT-23     | P    | NO  | -20             | ±12                 | -4.1                    | -0.3                 | -1      | /                    | /         | 36                    | 45        | 49                    | 57        |
| WM02P40M  | SOT-23     | P    | YES | -20             | ±8                  | -4                      | -0.3                 | -1      | /                    | /         | 30                    | 48        | 40                    | 60        |
| WM02P40M3 | SOT-23-6L  | P    | YES | -20             | ±8                  | -4                      | -0.3                 | -1      | /                    | /         | 30                    | 48        | 40                    | 60        |
| WM02P56M  | SOT-23     | P    | NO  | -20             | ±12                 | -5.6                    | -0.4                 | -1      | /                    | /         | 28                    | 38        | 36                    | 49        |
| WM02P56M2 | SOT-23-3L  | P    | NO  | -20             | ±12                 | -5.6                    | -0.4                 | -1      | /                    | /         | 18                    | 23        | 22                    | 30        |
| WM02P60M2 | SOT-23-3L  | P    | NO  | -20             | ±10                 | -6                      | -0.4                 | -1      | /                    | /         | 15                    | 23        | 19                    | 30        |
| WM01P41M  | SOT-23     | P    | NO  | -12             | ±8                  | -4.1                    | -0.5                 | -0.9    | /                    | /         | 30                    | 45        | 40                    | 60        |
| WM01P60M  | SOT-23     | P    | NO  | -12             | ±8                  | -6                      | -0.4                 | -1      | /                    | /         | 20                    | 28        | 30                    | 40        |
| WM02N08F  | DFN1006-3L | N    | YES | 20              | ±10                 | 0.75                    | 0.35                 | 1.1     | /                    | /         | 190                   | 380       | 260                   | 450       |
| WM02N08GR | SOT-323    | N    | YES | 20              | ±12                 | 0.75                    | 0.3                  | 1.1     | /                    | /         | 190                   | 380       | 260                   | 450       |
| WM02N08LS | SOT-523    | N    | YES | 20              | ±12                 | 0.75                    | 0.35                 | 1.1     | /                    | /         | 190                   | 380       | 260                   | 450       |
| WM02N08H  | SOT-723    | N    | YES | 20              | ±12                 | 0.75                    | 0.35                 | 1.1     | /                    | /         | 190                   | 380       | 260                   | 450       |

| Part No.  | Package    | Type | ESD | V <sub>DS</sub> | V <sub>GS</sub> Max | I <sub>B</sub> at 25 °C | V <sub>GS</sub> (th) |      |         | R <sub>DS(on)</sub>  |         |                       |           |                       |           |
|-----------|------------|------|-----|-----------------|---------------------|-------------------------|----------------------|------|---------|----------------------|---------|-----------------------|-----------|-----------------------|-----------|
|           |            |      |     |                 |                     |                         |                      |      |         | V <sub>GS</sub> =10V |         | V <sub>GS</sub> =4.5V |           | V <sub>GS</sub> =2.5V |           |
|           |            |      |     |                 |                     |                         | V                    | V    | A(Max.) | V(Min.)              | V(Max.) | mΩ (Typ.)             | mΩ (Max.) | mΩ (Typ.)             | mΩ (Max.) |
| WM02N25M  | SOT-23     | N    | NO  | 20              | ±10                 | 2.5                     | 0.4                  | 1    | /       | /                    | 54      | 80                    | 76        | 120                   |           |
| WM02N20F  | DFN1006-3L | N    | NO  | 20              | ±10                 | 2.5                     | 0.4                  | 1    | /       | /                    | 55      | 85                    | 77        | 125                   |           |
| WM02N20G  | SOT-323    | N    | NO  | 20              | ±10                 | 2                       | 0.4                  | 1.2  | /       | /                    | 45      | 70                    | 60        | 110                   |           |
| WM02N28M  | SOT-23     | N    | NO  | 20              | ±10                 | 2.8                     | 0.4                  | 1.2  | /       | /                    | 40      | 60                    | 55        | 100                   |           |
| WM02N31M  | SOT-23     | N    | NO  | 20              | ±8                  | 3.1                     | 0.4                  | 1.2  | /       | /                    | 33      | 45                    | 43        | 60                    |           |
| WM02N45M  | SOT-23     | N    | NO  | 20              | ±10                 | 4.5                     | 0.5                  | 0.9  | /       | /                    | 21      | 30                    | 26        | 40                    |           |
| WM02N50M  | SOT-23     | N    | NO  | 20              | ±8                  | 5                       | 0.45                 | 1    | /       | /                    | 16      | 24                    | 21        | 35                    |           |
| WM02N50M2 | SOT-23-3L  | N    | NO  | 20              | ±8                  | 5                       | 0.45                 | 1    | /       | /                    | 16      | 24                    | 21        | 35                    |           |
| WM02N70M  | SOT-23     | N    | YES | 20              | ±12                 | 7                       | 0.4                  | 1    | /       | /                    | 14      | 25                    | 18        | 30                    |           |
| WM02N75M2 | SOT-23-3L  | N    | NO  | 20              | ±10                 | 7.5                     | 0.3                  | 1    | /       | /                    | 10      | 16                    | 13        | 23                    |           |
| WM03N09F  | DFN1006-3L | N    | YES | 30              | ±12                 | 0.93                    | 0.5                  | 1.5  | /       | /                    | 320     | 500                   | 410       | 600                   |           |
| WM03N06M  | SOT-23     | N    | YES | 30              | ±12                 | 0.6                     | 0.7                  | 1.1  | /       | /                    | 310     | 500                   | 400       | 680                   |           |
| WM03N01L  | SOT-523    | N    | YES | 30              | ±20                 | 0.1                     | 0.8                  | 1.45 | 1000    | 3000                 | 1900    | 4000                  | /         | /                     |           |
| WM03N01G  | SOT-323    | N    | YES | 30              | ±20                 | 0.1                     | 0.8                  | 1.45 | 1100    | 3000                 | 1500    | 4000                  | /         | /                     |           |
| WM03N01H  | SOT-723    | N    | YES | 30              | ±20                 | 0.1                     | 0.8                  | 1.45 | 1100    | 3000                 | 1500    | 4000                  | /         | /                     |           |
| WM03N32M  | SOT-23     | N    | NO  | 30              | ±20                 | 3.2                     | 1                    | 2    | 36      | 47                   | 49      | 65                    | /         | /                     |           |
| WM03N58M2 | SOT-23-3L  | N    | NO  | 30              | ±12                 | 5.8                     | 0.7                  | 1.4  | 23      | 35                   | 26      | 40                    | 40        | 52                    |           |
| WM03N57M  | SOT-23     | N    | NO  | 30              | ±20                 | 5.8                     | 1                    | 2.5  | 25      | 36                   | 28      | 45                    | /         | /                     |           |
| WM03N58M  | SOT-23     | N    | NO  | 30              | ±12                 | 5.8                     | 0.7                  | 1.4  | 23      | 35                   | 26      | 40                    | 40        | 52                    |           |
| WM04N50M  | SOT-23     | N    | NO  | 40              | ±20                 | 5                       | 1                    | 2.5  | 29      | 45                   | 41      | 60                    | /         | /                     |           |
| WM05N02M  | SOT-23     | N    | NO  | 50              | ±20                 | 0.2                     | 0.5                  | 1.5  | 1100    | 3500                 | 1200    | 6000                  | /         | /                     |           |
| WM05N02G  | SOT-323    | N    | NO  | 50              | ±20                 | 0.22                    | 0.8                  | 1.45 | 1100    | 3500                 | 1200    | 6000                  | /         | /                     |           |
| WM06N03F  | DFN1006-3L | N    | YES | 60              | ±20                 | 0.45                    | 1                    | 2.5  | 1300    | 3000                 | 1400    | 4000                  | /         | /                     |           |
| WM06N03M  | SOT-23     | N    | YES | 60              | ±20                 | 0.34                    | 1                    | 2.5  | 1300    | 2100                 | 1400    | 2800                  | /         | /                     |           |
| WM06N01M  | SOT-23     | N    | NO  | 60              | ±20                 | 0.115                   | 1                    | 2.5  | 1300    | 3000                 | 1400    | 4000                  | /         | /                     |           |
| WM06N03G  | SOT-323    | N    | YES | 60              | ±20                 | 0.34                    | 1                    | 2.5  | 1300    | 2100                 | 1400    | 2800                  | /         | /                     |           |



| Part No.  | Package   | Type | ESD | V <sub>bs</sub> | V <sub>gs</sub> Max | I <sub>b</sub> at 25 °C | V <sub>gs</sub> (th) |         | R <sub>gs</sub> (on) |           |                       |           |                       |           |
|-----------|-----------|------|-----|-----------------|---------------------|-------------------------|----------------------|---------|----------------------|-----------|-----------------------|-----------|-----------------------|-----------|
|           |           |      |     |                 |                     |                         |                      |         | V <sub>gs</sub> =10V |           | V <sub>gs</sub> =4.5V |           | V <sub>gs</sub> =2.5V |           |
|           |           |      |     | V               | V                   | A(Max.)                 | V(Min.)              | V(Max.) | mΩ (Typ.)            | mΩ (Max.) | mΩ (Typ.)             | mΩ (Max.) | mΩ (Typ.)             | mΩ (Max.) |
| WM06N03L  | SOT-523   | N    | YES | 60              | ±20                 | 0.34                    | 1                    | 2       | 1300                 | 2100      | 1400                  | 2800      | /                     | /         |
| WM06N03H  | SOT-723   | N    | YES | 60              | ±20                 | 0.34                    | 1                    | 2       | 1300                 | 2100      | 1400                  | 2800      | /                     | /         |
| WM06N30M  | SOT-23    | N    | NO  | 60              | ±20                 | 3                       | 1                    | 2.5     | 75                   | 100       | 90                    | 110       | /                     | /         |
| WM10N02M  | SOT-23    | N    | NO  | 100             | ±20                 | 0.17                    | 1                    | 2.5     | 3400                 | 6000      | 3700                  | 9000      | /                     | /         |
| WM10N02G  | SOT-323   | N    | NO  | 100             | ±20                 | 0.17                    | 1.5                  | 2.5     | 3400                 | 6000      | 3700                  | 9000      | /                     | /         |
| WM10N20M  | SOT-23    | N    | NO  | 100             | ±20                 | 2                       | 1.1                  | 3       | 245                  | 280       | 260                   | 310       | /                     | /         |
| WM10N33M  | SOT-23    | N    | NO  | 100             | ±20                 | 3.3                     | 1                    | 2.5     | 96                   | 130       | 120                   | 160       | /                     | /         |
| WM10N35M2 | SOT-23-3L | N    | NO  | 100             | ±20                 | 3.5                     | 1                    | 2.5     | 78                   | 100       | 92                    | 120       | /                     | /         |



## Multi-Channel Small Signal MOSFET

| Part No.   | Package   | Type   | ESD | V <sub>DS</sub> | V <sub>GS</sub> Max | I <sub>D</sub> at 25 °C | V <sub>GS</sub> (th) |      | R <sub>DS(on)</sub>  |      |                       |         |                       |           |
|------------|-----------|--------|-----|-----------------|---------------------|-------------------------|----------------------|------|----------------------|------|-----------------------|---------|-----------------------|-----------|
|            |           |        |     |                 |                     |                         |                      |      | V <sub>GS</sub> =10V |      | V <sub>GS</sub> =4.5V |         | V <sub>GS</sub> =2.5V |           |
|            |           |        |     |                 |                     |                         |                      |      | V                    | V    | A(Max.)               | V(Min.) | V(Max.)               | mΩ (Typ.) |
| WM05DP01D  | SOT-363   | Dual P | NO  | -50             | ±20                 | -0.13                   | -0.9                 | -2   | 1700                 | 8000 | 1900                  | 10000   | /                     | /         |
| WM02DP06D  | SOT-363   | Dual P | YES | -20             | ±12                 | -0.66                   | -0.3                 | -1.1 | /                    | /    | 450                   | 520     | 650                   | 780       |
| WM02DP06T  | SOT-563   | Dual P | YES | -20             | ±12                 | -0.66                   | -0.3                 | -1.1 | /                    | /    | 450                   | 520     | 650                   | 780       |
| WM02DN08T  | SOT-563   | Dual N | YES | 20              | ±12                 | 0.75                    | 0.35                 | 1.1  | /                    | /    | 190                   | 380     | 260                   | 450       |
| WM02DN08DR | SOT-363   | Dual N | YES | 20              | ±12                 | 0.75                    | 0.3                  | 1.1  | /                    | /    | 190                   | 380     | 260                   | 450       |
| WM06DN03D  | SOT-363   | Dual N | YES | 60              | ±20                 | 0.34                    | 1                    | 2.5  | 1300                 | 3000 | 1400                  | 4000    | /                     | /         |
| WM03DP50A  | SOP-8L    | Dual P | NO  | -30             | ±20                 | -5                      | -1                   | -2.1 | 40                   | 60   | 57                    | 90      | /                     | /         |
| WM02DN48M3 | SOT-23-6L | Dual N | NO  | 20              | ±12                 | 4.8                     | 0.5                  | 1.2  | /                    | /    | 20                    | 30      | 25                    | 40        |
| WM02DN48A  | SOP-8L    | Dual N | NO  | 20              | ±12                 | 4.8                     | 0.5                  | 1.2  | /                    | /    | 20                    | 30      | 25                    | 40        |
| WM02DN70A  | TSSOP-8L  | Dual N | YES | 20              | ±12                 | 7                       | 0.6                  | 1    | 11                   | 17   | 12                    | 19      | 15                    | 23        |
| WM03DN85A  | SOP-8L    | Dual N | NO  | 30              | ±20                 | 8.5                     | 1                    | 2.5  | 19                   | 23   | 25                    | 32      | /                     | /         |
| WM02DN50M3 | SOT-23-6L | Dual N | NO  | 20              | ±12                 | 5                       | 0.5                  | 1.2  | /                    | /    | 21                    | 27      | 26                    | 35        |
| WM02DN60M3 | SOT-23-6L | Dual N | NO  | 20              | ±12                 | 6                       | 0.7                  | 1.2  | /                    | /    | 15                    | 20      | 19                    | 27        |
| WM02DN70M3 | SOT-23-6L | Dual N | YES | 20              | ±12                 | 7                       | 0.6                  | 1    | 11                   | 20   | 12                    | 22      | 15                    | 26        |
| WM02DH08D  | SOT-363   | N+P    | YES | 20              | ±12                 | 0.75                    | 0.35                 | 1.1  | /                    | /    | 190                   | 380     | 260                   | 450       |
|            |           |        | YES | -20             | ±12                 | -0.66                   | -0.3                 | -1.1 | /                    | /    | 450                   | 520     | 650                   | 780       |
| WM02DH08T  | SOT-563   | N+P    | YES | 20              | ±12                 | 0.75                    | 0.35                 | 1.1  | /                    | /    | 190                   | 380     | 260                   | 450       |
|            |           |        | YES | -20             | ±12                 | -0.66                   | -0.3                 | -1.1 | /                    | /    | 450                   | 520     | 650                   | 780       |
| WM02DH50M3 | SOT-23-6L | N+P    | NO  | 20              | ±8                  | 5                       | 0.5                  | 1    | /                    | /    | 35                    | 55      | 40                    | 75        |
|            |           |        | NO  | -20             | ±8                  | -4                      | -0.5                 | -1   | /                    | /    | 70                    | 90      | 90                    | 120       |
| WM03DH34M3 | SOT-23-6L | N+P    | NO  | 30              | ±12                 | 3.4                     | 1                    | 3    | 36                   | 47   | 49                    | 65      | /                     | /         |
|            |           |        | NO  | -30             | ±12                 | -2.3                    | -1                   | -3   | 65                   | 88   | 100                   | 138     | /                     | /         |
| WM03DH60A  | SOP-8L    | N+P    | NO  | -30             | ±20                 | -6                      | -1                   | -3   | 17                   | 24   | 23                    | 35      | /                     | /         |
|            |           |        | NO  | 30              | ±20                 | 5.8                     | 1                    | 2.5  | 25                   | 36   | 35                    | 45      | /                     | /         |



  
**上海:总部**  
研发&制造

  
**西安**  
研发中心

  
**无锡**  
研发中心

  
**长春**  
研发中心

  
**台北**  
研发&销售&应用

  
**成都**  
研发&销售

  
**深圳**  
销售&应用

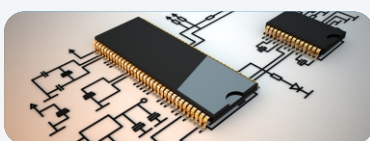
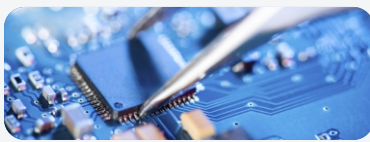
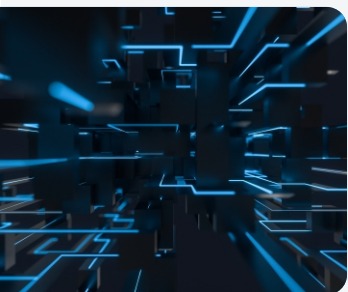
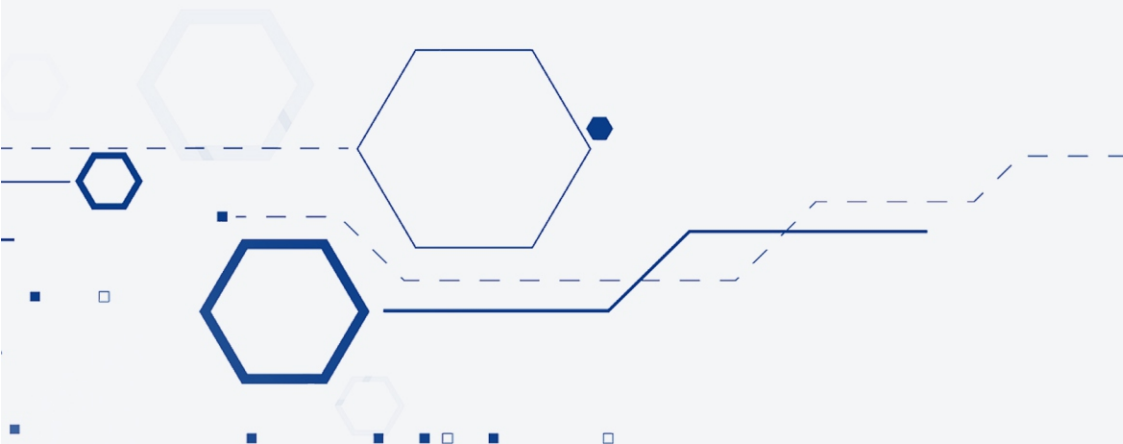
  
**合肥**  
销售&应用

  
**北京**  
销售

  
**韩国**  
销售

  
**欧洲**  
销售

  
**美国**  
销售(筹建中)



Wayon Electronics Co., Ltd.

Te:+86-21-68960674

Fax:+86-21-50757680

E-mail:market@way-on.com

Website: <http://www.way-on.com>

Add: No.1001,Shiwan 7th Road,Shanghai 201207, P.R. China

