

JUTOUCH TECHNOLOGY CO.,LTD

Touch Screen Customization Solutions

CONTENT

About JUTOUCH

Locations & Marketing

JUTOUCH Roadmap

Factory Show

Main Products

Products Applications

Main Materials Partners & Customers

Case Show

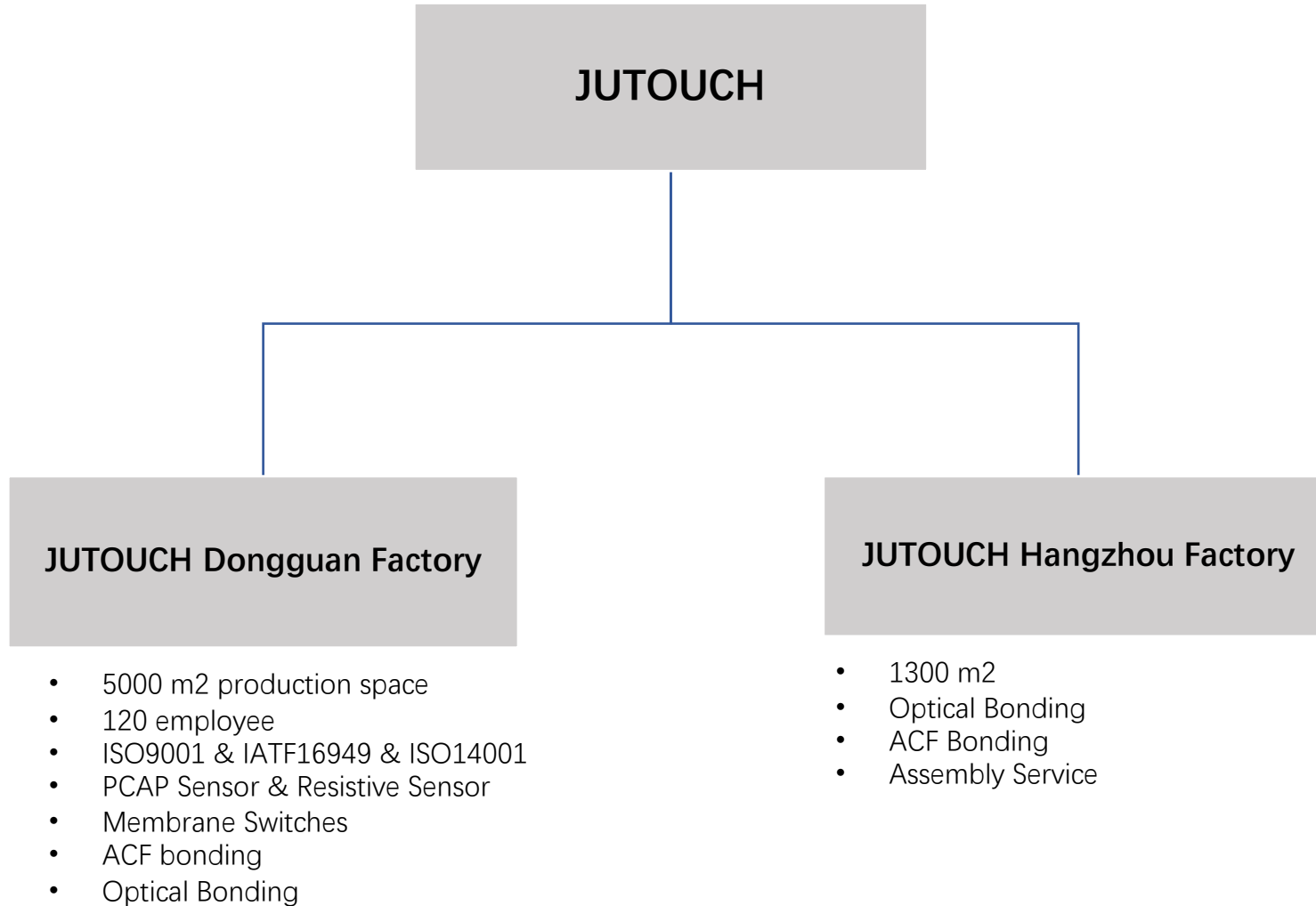
About JUTOUCH



Jutouch is a one-stop comprehensive manufacturer of touch display products with more than 10 years experience.

We are committed to providing high quality touch display and efficient technical services to various industries around the world.

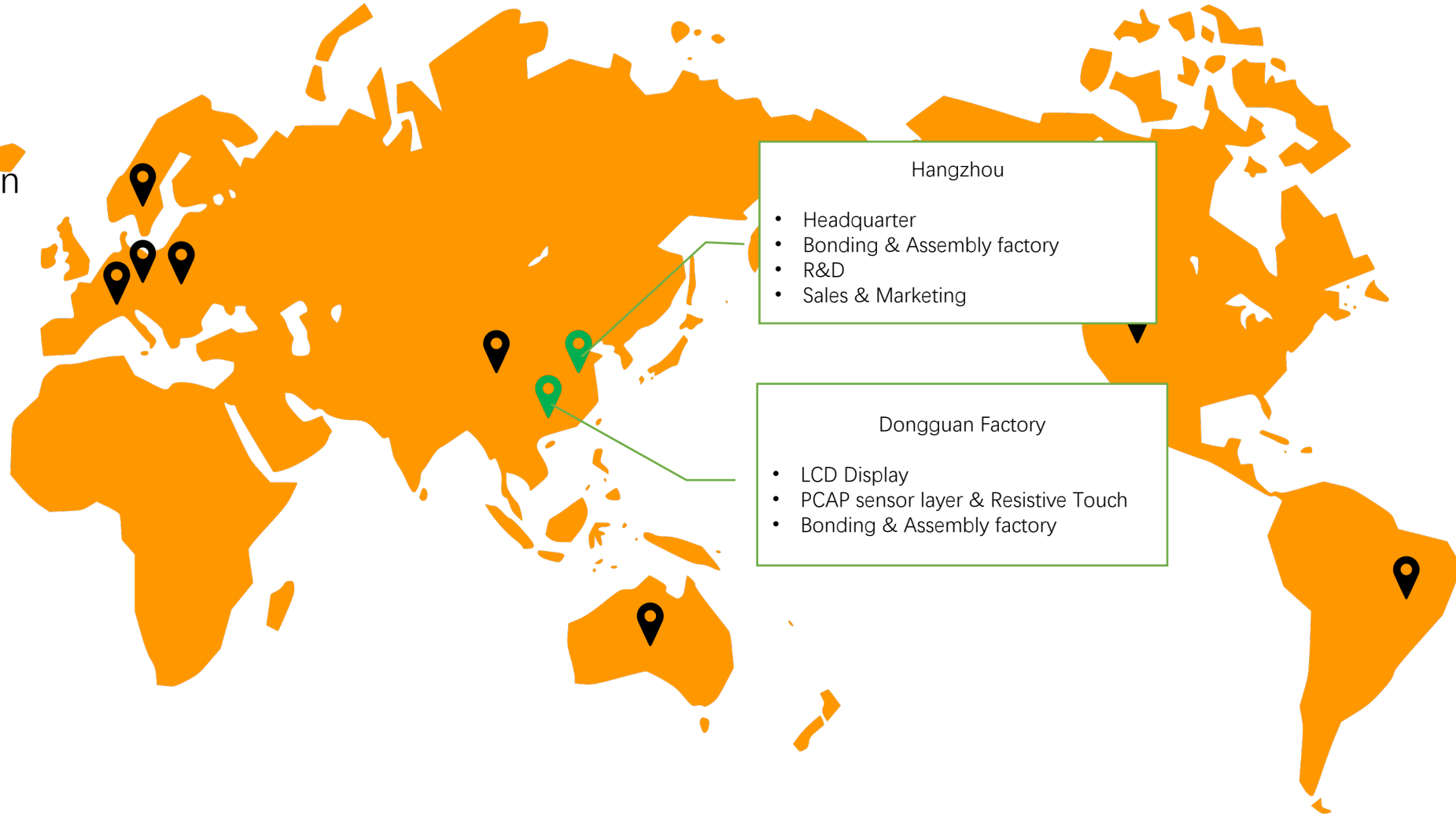
We are capable to design and manufacture almost all components of touch displays, And we have the most advanced and reliable optical bonding process. These enable us could provide the most reliable products for your projects.



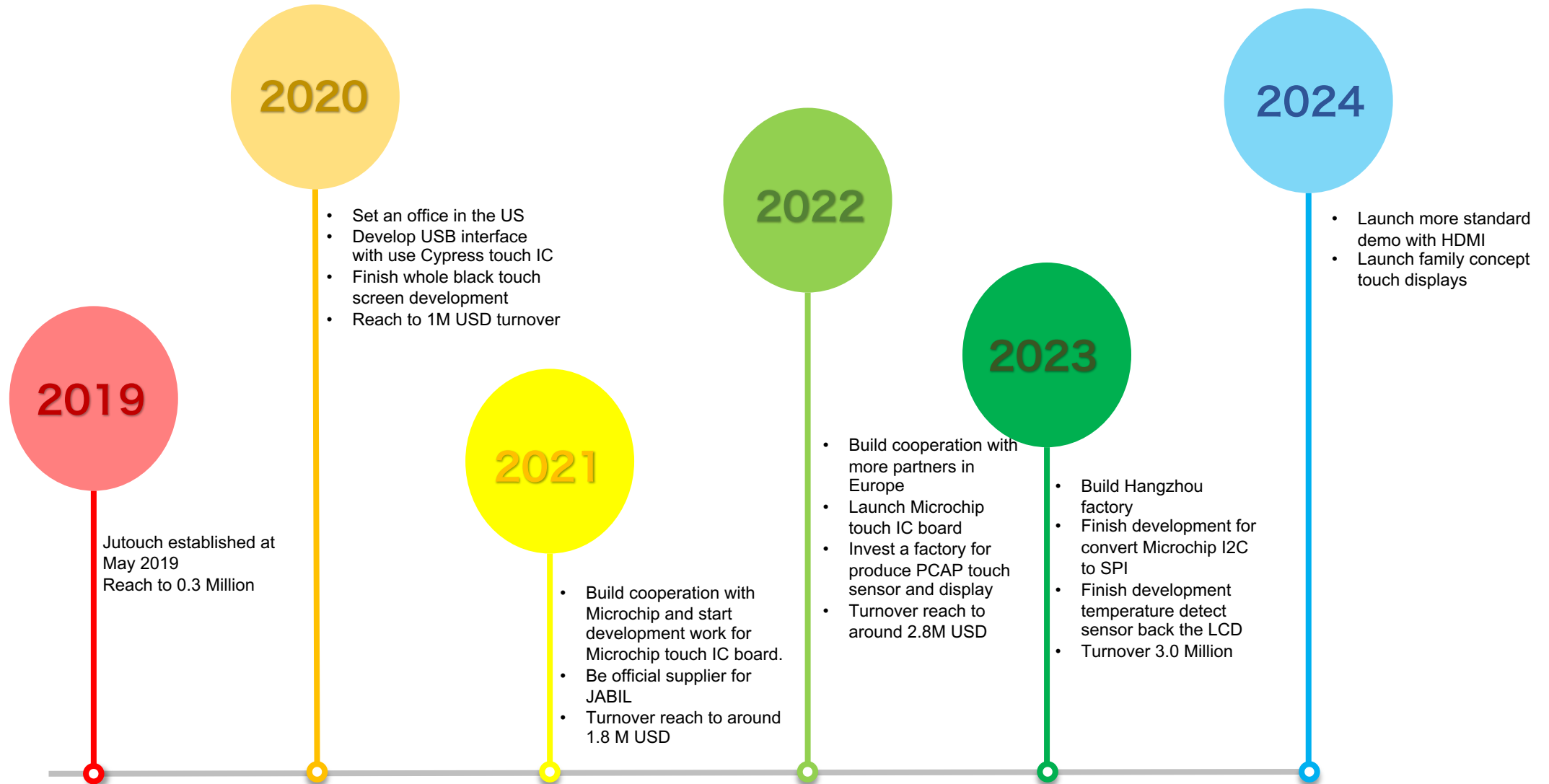
Headquarter: Hangzhou
Factory: Hangzhou & Dongguan

Main Markets:

- United Kingdom
- Germany
- Italy
- Netherland
- Canada
- America
- Brazil
- China
- Australia



JUTOUCH ROADMAP



Jutouch Factory



LOCATED:
DONGGUAN CITY,
HANGZHOU CITY



5000+ M2 PRODUCTION
WORKSHOP



CAPACITY:
1KK / MONTH FOR
INDUSTRIAL GRADE TOUCH
SCREEN,
300K-500K PER MONTH FOR
AUTOMOTIVE TOUCH
SCREEN

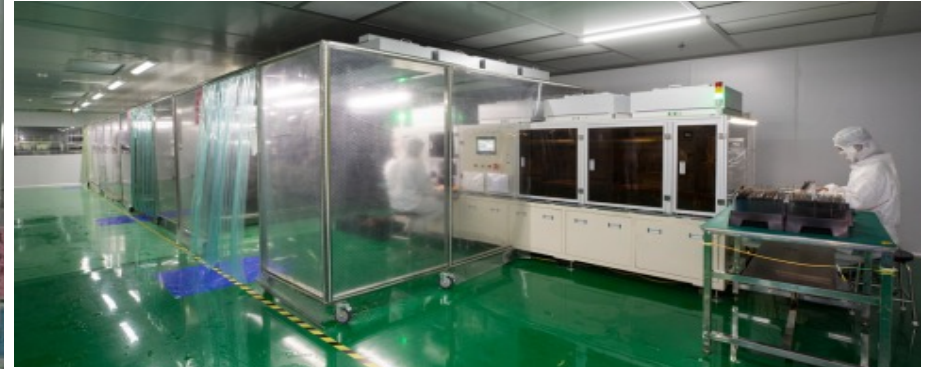


ISO9001, IATF16949,
ISO14001, QC080000
CERTIFIED

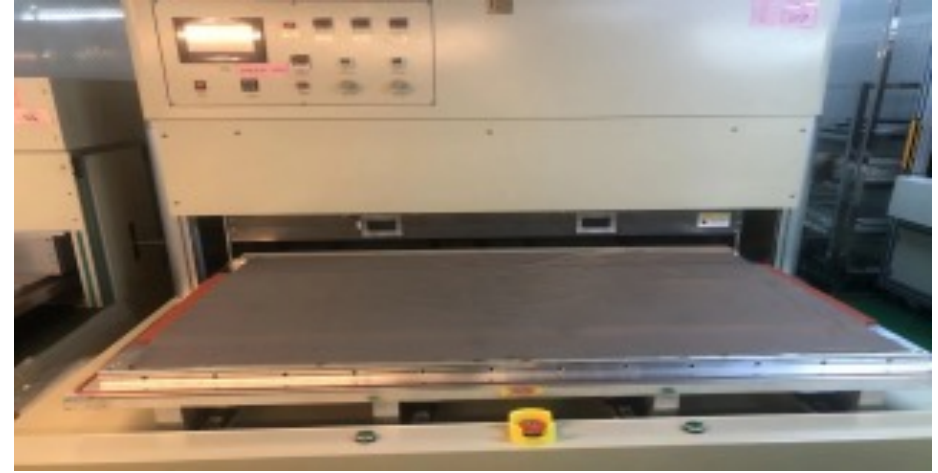


ROHS & REACH
COMPLIANCE

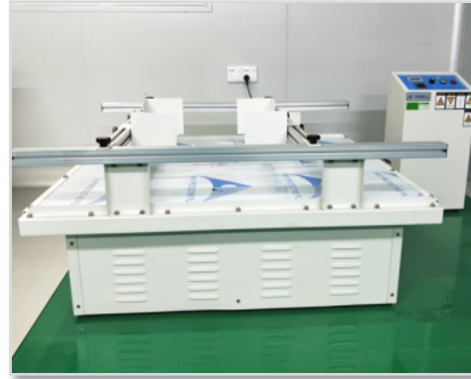
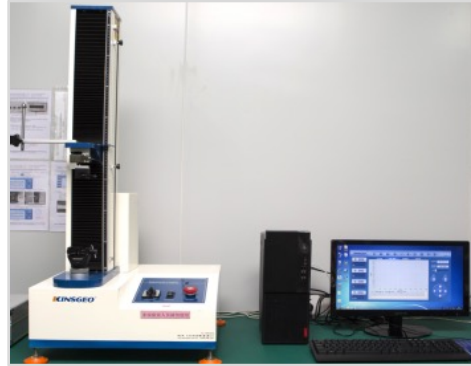
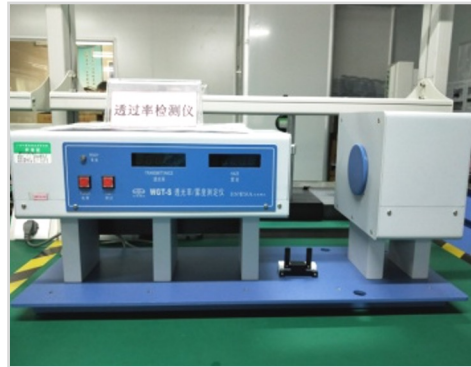
PCAP Manufacturing Workshop

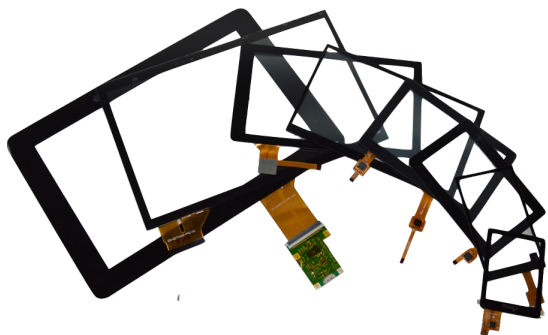


Optical Bonding Facilities

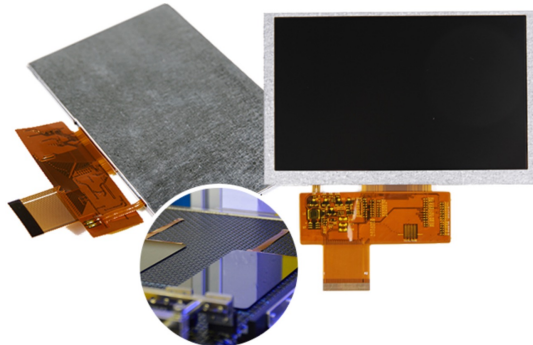


Laboratory Devices





**PCAP Touch &
RTP**



TFT LCD



**Membrane
Switches**



AD Board

Structure:

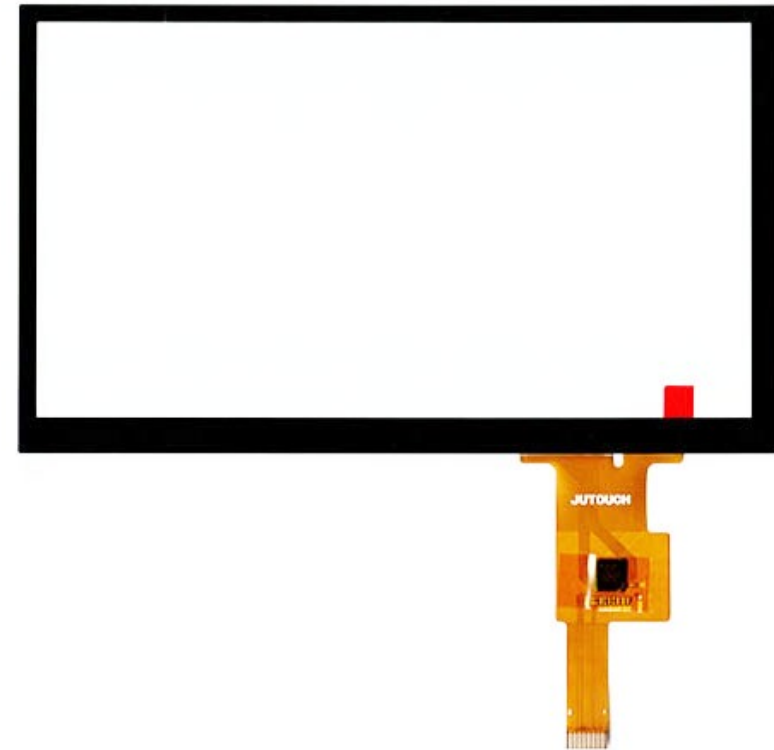
- Glass + Glass
- Glass + Film + Film
- PET / PMMA + Glass

Features:

- Multi touch support
- Uniform impedance design
- Best ESD protection design
- High Sensitivity Sensor Materials

Others:

- Max support 1.44inch to 55inch
- Max support touch with 10mm glass or 5mm PMMA
- AG, AR, AF, AM and Anti-UV light as options
- Touch working with water, gloves, oil with metal dust, blood, stylus and salty water



Capacitive Touch Panel

TFT LCD

Touch Display Module

Cover Lens Options

- White Glass, Soda Glass, Alu-Sil Glass, PMMA
- 0.55mm-10mm thickness
- Chemical Tempering & Thermal Tempering
- Anti-UV printing & Ceramic Printing
- Etched AG & Selective Etched AG
- AR, AF, AM coating

SHAPE



Polishing



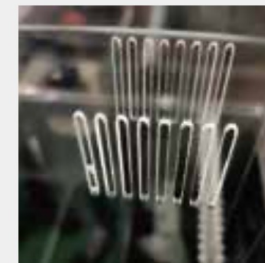
CNC the holes



CNC step design



3D cover glass customization



CNC speaker holes

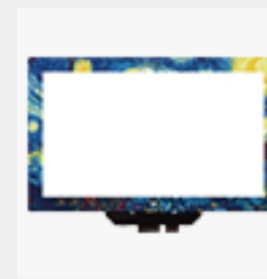
PRINTING



Gradient logo printing

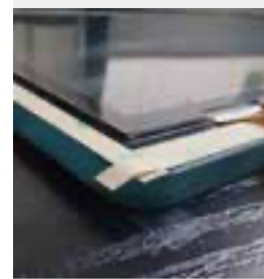


Ceramic printing
Anti-UV light ink printing



Photoreal on cover glass

MATERIALS



Max to 10mm Glass



Max to 5mm PMMA

SENSOR TECHNOLOGIES:

Sensor Layer Options

- Glass sensor (DITO, SITO)
- Film sensor (single film, double film)
- Silver Routing, Nickel Gold Routing, Molybdenum Aluminum Molybdenum
- 0.4mm, 0.55mm, 0.7mm, 1.1mm, 1.8mm thickness



Silver sensor

Size $\leq 32''$

Smallest pattern distance:
Silk: 120UM; laser: 80UM

Operating temp -20°C~70°C
Storage temp -30°C~80°C

First option for DITO,
low tooling cost, cost-effective,
easy manufacturing process



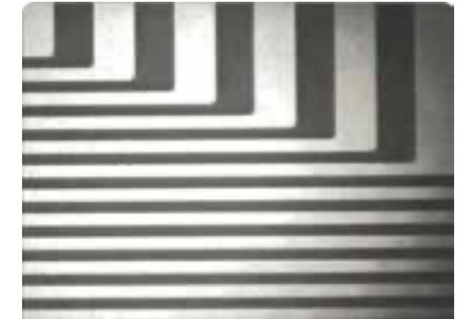
Yellow light exposure sensor

Size $\leq 15.6''$

Smallest pattern distance: 50UM

Operating temp -35°C~85°C
Storage temp -40°C~90°C

High reliability, surface metal lines,
tooling cost and price little higher
than silver, first option for high
requirement with reliability



MoAlMo Sensor

Size $\leq 24''$

Smallest pattern distance: 50UM

Operating temp -35°C~85°C
Storage temp -40°C~90°C

First option for SITO, high reliability;
very complicated manufacturing
process; tooling cost and price both
high, high MOQ;

Capacitive Touch Panel

TFT LCD

Touch Display Module

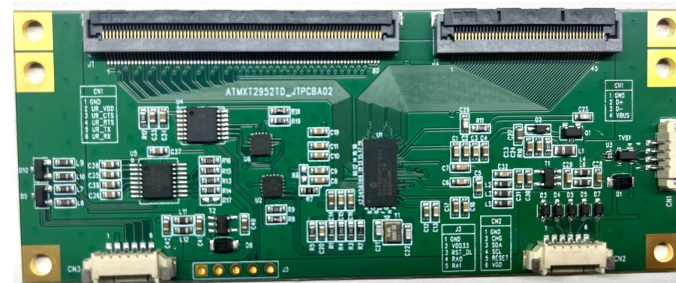
Jutouch New Developed Touch IC Controller Board (we will get the invention patent in 2024)

Features

- USB, I2C and RS232 interface
- Support advanced water resistance
- Support glove
- Support 10 mm glass (or 5 mm PMMA)
- Support passive stylus
- Support DITO, G/F, G/F/F, G/G, and Metal Mesh sensor
- Comprehensive driver support
- maXTouch studio tool support
- RoHS compliant



For size <15.6inch



For size <32inch



Standard Touch Panel with Microchip touch IC board

Size (inch)	P/N	TP V.A	C.G Outline	C.G Thickness	Sensor Outline	Interface	CTP IC	Operating Temperature °C	Storage Temperature °C	Matched LCD Resolution
7.0	JT070XT001-V1.0	155.21*86.92	185.21*116.92	2.0	164.40*99.40	USB&I2C	Microchip	-30 ~ 85	-40 ~ 90	1024*600、800*480 TN
	JT070XT002-V1.0	153.40*92.44	183.40*122.44	2.0	163.66*102.66	USB&I2C	Microchip	-30 ~ 85	-40 ~ 90	800*480 IPS
8.0	JT080XT001-V1.0	177.64*100.36	207.64*130.36	2.0	198.19*115.90	USB&I2C	Microchip	-30 ~ 85	-40 ~ 90	1280*720
8.4	JT084XT001-V1.0	No black printing	182.60*142.85	0.7	182.00*142.25	USB&I2C	Microchip	-30 ~ 85	-40 ~ 90	800*600
9.0	JT090XT001-V1.0	197.61*115.15	227.61*145.15	2.0	208.31*126.90	USB&I2C	Microchip	-30 ~ 85	-40 ~ 90	1024*600
	JT090XT002-V1.0	199.72*112.78	229.72*142.78	2.0	210.40*125.90	USB&I2C	Microchip	-30 ~ 85	-40 ~ 90	1280*720
10.1	JT101XT001-V1.0	223.72*126.28	253.72*156.28	2.0	235.50*140.00	USB&I2C	Microchip	-30 ~ 85	-40 ~ 90	1024*600
	JT101XT002-V1.0	217.96*136.60	247.96*166.60	2.0	229.73*147.76	USB&I2C	Microchip	-30 ~ 85	-40 ~ 90	1280*800、1920*1200
10.3	JT103XT001-V1.1	244.65*92.37	274.65*122.37	2.0	253.71*104.88	USB&I2C	Microchip	-30 ~ 85	-40 ~ 90	1920*720
10.4	JT104XT001-V1.1	211.43*158.82	241.43*188.82	2.0	226.00*174.80	USB&I2C	Microchip	-30 ~ 85	-40 ~ 90	1024*768
11.6	JT116XT001-V1.0	257.32*145.18	287.32*175.18	2.0	272.50*163.50	USB&I2C	Microchip	-30 ~ 85	-40 ~ 90	1920*1080
12.1	JT121XT001-V1.0	246.76*185.32	286.76*225.32	2.0	258.40*203.00	USB&I2C	Microchip	-30 ~ 85	-40 ~ 90	1024*768
	JT121XT002-V1.0	262.12*164.20	292.12*194.20	2.0	276.70*180.60	USB&I2C	Microchip	-30 ~ 85	-40 ~ 90	1280*800
12.3	JT123XT001-V1.0	293.03*110.51	323.03*140.51	2.0	303.62*122.61	USB&I2C	Microchip	-30 ~ 85	-40 ~ 90	1920*720

Standard Touch Panel with Microchip touch IC board

Size (inch)	P/N	TP V.A	C.G Outline	C.G Thickness	Sensor Outline	Interface	CTP IC	Operating Temperature °C	Storage Temperature °C	Matched LCD Resolution
13.3	JT133XT001-V1.0	294.47*166.08	324.47*196.08	2.0	307.70*182.10	USB&I2C	Microchip	-30 ~ 85	-40 ~ 90	1920*1080
15.0	JT150XT001-V1.0	304.73*228.70	356.13*273.00	2.0	324.50*248.30	USB&I2C	Microchip	-30 ~ 85	-40 ~ 90	1024*768
15.6	JT156XT001-V1.0	345.16*194.59	385.16*234.59	2.0	361.80*215.40	USB&I2C	Microchip	-30 ~ 85	-40 ~ 90	1366*768、1920*1080
17.0	JT170XT001-V1.0	338.92*271.34	388.92*321.34	2.0	357.50*295.50	USB&I2C&RS232	Microchip	-30 ~ 85	-40 ~ 90	1280*1024
17.3	JT173XT001-V1.0	382.89*215.81	432.89*265.81	2.0	402.00*239.00	USB&I2C&RS232	Microchip	-30 ~ 85	-40 ~ 90	1920*1080
18.5	JT185XT001-V1.0	410.80*231.40	440.80*271.40	1.1	427.40*253.10	USB&I2C&RS232	Microchip	-30 ~ 85	-40 ~ 90	1366*768、1920*1080
19.0	JT190XT001-V1.0	375.78*300.83	411.32*336.06	4.0	394.00*322.50	USB&I2C&RS232	Microchip	-30 ~ 85	-40 ~ 90	1280*1024
21.5	JT215XT001-V1.0	477.06*268.79	517.06*308.79	3.0	493.60*293.20	USB&I2C&RS232	Microchip	-30 ~ 85	-40 ~ 90	1920*1080
23.8	JT238XT001-V1.0	528.04*297.46	578.04*347.46	3.0	545.00*318.40	USB&I2C&RS232	Microchip	-30 ~ 85	-40 ~ 90	1920*1080
27.0	JT270XT001-V1.0	589.89*337.31	658.89*397.31	3.0	622.00*363.40	USB&I2C&RS232	Microchip	-30 ~ 85	-40 ~ 90	1920*1080
31.5	JT315XT001-V1.0	699.40.*393.85	759.40*453.85	3.0	718.20*416.05	USB&I2C&RS232	Microchip	-30 ~ 85	-40 ~ 90	1920*1080

Capacitive Touch Panel

TFT LCD

Touch Display Module



TFT LCDs Main Features

- Size from 1.37inch – 55inch
- At least 5-7 years supply availability
- Sunlight readable TFT LCD with high brightness
- Extreme operating temperature & long LED lifetime
- Customization for FPC, Interface, Metal frame, backlight, etc

HannStar TIANMA

CHIMEI INNOLUX

AUO ORTUSTECH

BOE

- Available for all these brands original LCDs and good price
- Also accept customer provide LCD for bonding the Touch

Other Solutions for TFT LCD

- 1- Industrial grade LCD with extreme operating temperature & high luminance & long LED lifetime.
- 2- Customization available for LCD backlight, FPC, connector, PCB, IC controller, etc.
- 3- All direction view able with wear polarized sunglasses.
- 4- NVIS filter & EMI filter & Heating Film could be added on LCD for special markets.

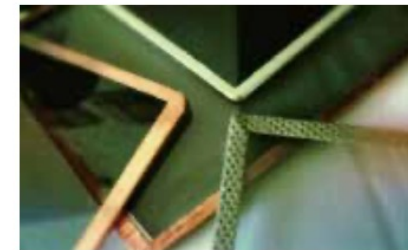
Heating Layer



NVIS filter



EMI layer



Capacitive Touch Panel

TFT LCD

Touch Display Module

Size (inch)	Resolution (pixels)	AA Dimension (mm)	Display Mode	Interface	Outline Dimension (W×H×D,mm)	Max Brightness (cd/m ²)	Remark
0.96	80×160	10.8×21.7	IPS	SPI/MCU	14.04×27.95×1.45	400	
1.22	240×204	30.96×26.316	IPS	SPI/MCU	33.6×33.02×1.6	400	round
1.44	128×128	25.50×26.50	TN	SPI/MCU	30.70×36.0×2.55	400	square type
1.54	240×240	27.72×27.72	IPS	SPI/MCU	31.2×35.1×1.6	400	square type
1.77	128×160	28.032×35.04	TN	SPI/MCU	34×45.83×2.4	400	
2	480×360	40.82×30.62	IPS	RGB/MIPI	46.1×40.96×2.54	450	
					44.25×39.30×2.30	450	
	320×240	40.8×30.6	IPS	RGB/MIPI/SPI	46.1×40.96×2.53	400	
2.2	240×320	33.84×45.12	TN	SPI/MCU	42.1×56.6×4.2	130	transflective
2.3	320×240	46.75×35.06	TN	RGB/MCU/SPI	50.9×45.8×3.6	400	
2.4	240×320	36.72×48.96	TN	SPI/RGB/MCU	42.72×60.26×2.2	400	
			IPS	SPI/RGB/MCU	40.92×57.45×2.06	500	
					42.72×59.46×2.2	500	
2.7	320×240	58.8×33.06	IPS	RGB	67.5×39.1×2.4	220	
2.8	240×320	43.20×57.60	TN	SPI/RGB/MCU	50×69.2×2.35	400	
					50×69.2×2.5	400	
			IPS	SPI/RGB/MCU	50×69.2×2.4	400	
2.86	376×960	26.51×67.68	IPS	RGB/MIPI	31.20×76.6×2.11	400	bar type
2.9	320×120	70.08×26.28	IPS	RGB/LVDS	78.5×38.65×3.2	1200	bar type
2.95	480×854	36.72×65.28	IPS	RGB/MIPI	43.44×75.31×2.65	400	
3	240×400	38.88×64.8	TN	SPI/RGB	45.04×77.0×2.6	400	independent glass model
	320×240	65.52×36.84	IPS	RGB	75.31×43.44×2.65	350	
	360×640	36.72×65.28	IPS	RGB/MIPI	43.44×75.31×2.65	350	
44.66×77.8×5.56					1200		

Capacitive Touch Panel

TFT LCD

Touch Display Module

Size (inch)	Resolution (pixels)	AA Dimension (mm)	Display Mode	Interface	Outline Dimension (W×H×D,mm)	Max Brightness (cd/m ²)	Remark
3.2	240×320	48.6×64.8	TN	SPI/RGB/MCU	55.04×77.7×2.5	400	
			IPS		57.54×79.2×3.6	400	
3.5	320×240	70.08×52.56	TN	SPI/RGB	76.9×63.9×3.3	1100	
			IPS	RGB	82.40×65.80×6.8	1000	
	320×480	48.96×73.44	TN	SPI/RGB/MIPI/MCU	55.26×84.69×2.4	500	
			IPS	SPI/RGB/MIPI/MCU	54.66×82.94×3.0	600	
640×480	70.08×52.56	IPS	RGB/MIPI	76.95×63.95×3.3	700		
3.54	800×640	90×72	IPS	RGB	97.7 ×83.89 ×5.6	1200/2000	round, automotive, wide temp.
					97.7 ×83.89 ×4.1	1200	round, automotive, wide temp.
3.8	480×76	95.04×15	TN	RGB/LVDS	104×27×2.95	1200	bar type
	480×100	95.04×19.8	TN	RGB/LVDS	105.5×36×3.0	1200	bar type
3.89	306×544	43.146×76.704	IPS VA	LVDS	51.8×98.9×3.0	1000	parallelogram, automotive
3.9	480×128	95.04 × 25.34	TN	RGB/LVDS	105.5×37.8×3.0	1200	bar type
3.95	480×480	71.856×70.48	IPS	RGB/MIPI	78.5×78.5×2.2	450	
3.97	480×800	51.84×86.4	TN	RGB/MIPI/MCU	57.14×96.85×2.45	450	
			IPS	RGB/MIPI/MCU	57.54×97.25×2.30	500	
4.2	272×480	92.88×52.63	IPS	RGB/LVDS	103.7×60×6	900	automotive, wide temp.
	480×272			RGB	102.5×67.0×8.4	700	automotive, wide temp.
	720×672	RGB/MIPI		81.38×79.68×1.96	450		
4.3	480×272	95.04×53.86	TN	RGB	103.6×65.58×2.95	1000	
			IPS	RGB/LVDS(with PCBA board)	105.5×67.2×2.95	1000	
	480×800	56.16×93.6	IPS		RGB	105.5×67.2×2.95	1000
				109.4×69.15×3.0		1000	
				60.34×102.4×1.9		500	
800×480	95.04×53.86	IPS	RGB/LVDS(with PCBA board)	62×112×5.4	280		
				105.5×67.2×2.95	700		

Capacitive Touch Panel

TFT LCD

Touch Display Module

Size (inch)	Resolution (pixels)	AA Dimension (mm)	Display Mode	Interface	Outline Dimension (W×H×D,mm)	Max Brightness (cd/m ²)	Remark
4.46	480×854	55.44×98.637	TN	RGB/MIPI	60×109.1×1.9	500	
4.6	800×320	108×43.2	TN	RGB/LVDS(with PCBA board)	119.0×56.54×3	1200	bar type
5	480×272	110.88×62.83	TN	RGB/LVDS(with PCBA board)	120.7×75.8×2.95	1000	
	640×480	101.57×76.18	TN	RGB/LVDS(with PCBA board)	117.65×88.43×5.8	1000	
	800×480	108.0×64.8	TN	RGB/SPI/LVDS(with PCBA board)	120.7×75.8×2.95	1000	
					120.7×76.3×2.95	1000	
				RGB/SPI	120.26×75.36×2.78	30	transflective
					120.7 ×75.8 ×4.91	150	transflective
	IPS	RGB/LVDS(with PCBA board)	120.7×75.8×2.95	1000			
			120.7×75.8×4.8	1500	automotive grade, wide temp.		
	480×854	61.63×109.65	IPS	RGB/MIPI	121×78.8×6.8	1500	automotive, wide temp.
					65.96×120.60×2.20	500	
				64.90×119.20×1.99	500		
	720×1280	62.1×110.4	IPS	MIPI	65.3×119.3×1.65	400	
5.5	1080×1920	68.04×120.96	IPS	MIPI	81.04×138.06×4	2000	
	720×1280	67.93×120.77	IPS	MIPI	70.65×129.2×1.58	480	
5.7	640×480	115.20×86.40	TN	RGB/LVDS	144×104.6×13.1	900	
6.2	800×480	137.52×77.232	TN	RGB/LVDS(with PCBA board)	155.2×88.2×5.0	850	
6.5	800×320	154.08×75.28	TN	RGB/LVDS(with PCBA board)	165×75.56×3.5	1000	bar type
	800×480	143.400×76.704	TN	RGB/LVDS(with PCBA board)	155.2×89.4×5.5	900	
	1024×400	154.2×57.28	IPS	LVDS	165×75.56×3.55	400	bar type
6.75	800×480	151.8×76.92	TN	RGB	163×91×4.9	1200	
6.86	480×1280	60.22×160.59	IPS	MIPI/LVDS	66.7×181×4.4	1000	bar type
					66.50×180.8×4.7	500	bar type
6.9	1024×224	170.5×37.3	IPS	LVDS	178.8×49.6×4.5	750	bar type



Capacitive Touch Panel			TFT LCD			Touch Display Module			
Size (inch)	Resolution (pixels)	AA Dimension (mm)	Display Mode	Interface	Outline Dimension (W×H×D,mm)	Max Brightness (cd/m ²)	Remark		
7	280×1424	33.6×170.88	IPS	MIPI	38.2×186.62×3.2	900	bar type		
					38.26×181.5×3.46	400	bar type		
	800×480	154.08×85.92	TN	RGB/LVDS(with PCBA board)	164.9×100×2.8	600			
					164.9×100×3.5	700			
					165×100×5.8	1300	wide temperature		
					165×99.6×6.5	2000			
					165×104×6.2	600			
					165×104.44×5.2	600			
		152.4×91.44	TN	RGB/LVDS(with PCBA board)	RGB/LVDS	165×104.44×5.2	675		
						165 ×106.4 ×4	550		
						164.26×103.26×6.3	1500	automotive, wide temp.	
						165.1 ×104.1 ×6.3	1500	automotive, wide temp.	
	1024×600	154.21×85.92	TN	LVDS/RGB/MIPI	166.1 ×106 ×7.5	1500	automotive, wide temp.		
					163.8×97×2.8	500			
					164.9×100×3.5	700			
					165.0×100×4.8	800			
					165.0×100×5.8	1000			
			165.0×99.6×6.5		2000				
			153.6×90.0		TN	LVDS	164.1×97.16×2.6	400	
							164.9×100×2.8	600	
164.9×100×3.5							600		
165.0×100×4.8							800		
165.0×100×5.8		1000		wide temperature					
152.45×91.47		IPS	LVDS	165.0×99.6×6.5	2000	super high brightness			
	165.75×105.39×2.8			500					
				LVDS	165.75×105.39×3.5	600			
	1280×768	152.45×91.47	IPS	LVDS	166.9×108.65×6.25	1000			
7.84	400×1280	59.4×190.08	IPS	LVDS/MIPI	67.6×205.78	500	bar type		

Capacitive Touch Panel			TFT LCD			Touch Display Module	
Size (inch)	Resolution (pixels)	AA Dimension (mm)	Display Mode	Interface	Outline Dimension (W×H×D,mm)	Max Brightness (cd/m ²)	Remark
8	800×480	176.64×99.36	TN	RGB/LVDS(with PCBA board)	192.8×116.9×6.4	900	
	800×600	162.0×121.5	TN	RGB/LVDS(with PCBA board)	183.0×141.0×3.5	600	
					183.0×141.0×5.8	1400	
					183.0×141.0×6.3	900	
	1024×600	176.64×99.36	TN	LVDS	192.8×116.9×6.4	900	
	1024×768	162.00×121.50	IPS	LVDS	174×136×2.45	450	
					183.0×141.0×3.5	500	
					183.0×141.0×6.3	800	
					183.0×140.75×5.8	1500	
		165.25×124.70	TN	LVDS	183.0×141.0×3.5	500	
800×1280	107.64×172.224	IPS	MIPI	114.7×184.2×2.5	350		
1280×720	177.024×99.576	IPS	LVDS	192.8×116.9×6.4	1200	automotive, wide temp.	
				190×120×6.0	800		
1200×1920	107.64×172.22	IPS	MIPI	119.41 ×184 ×4.5	1300		
				114.72×184.22 ×2.14	459		
8.22	1280×256	204.67×40.93	IPS	LVDS	213.18×54.15×17.18	5000	rearview mirror shaped wide temp
					213.88×54.85×11.58	2500	rearview mirror shaped wide temp
8.4	800×600	170.40×127.80	TN	RGB/LVDS(with PCBA board)	189.75×149.40×9.4	250	
8.8	480×1920	54.72×218.88	IPS	MIPI	67.0×237.0×6.4	800	bar type
	1280×480	209.28×78.48	IPS	LVDS	229.6×97.3×6.0	350	bar type
9	800×480	198×111.696	TN	RGB/LVDS(with PCBA board)	211.1×126.5×5.2	1000	
					211.1×126.5×5.8	1000	
	1024×600	196.608×114.15	TN	LVDS	210.7×126.5×5.0	800	
					211.1×126.5×5.8	800	
		196.608×114.15	IPS	LVDS	211.1×126.5×5.8	800	
	1920×384	224.64×44.93	IPS	LVDS	235.8×55.8×16.05	5500	rearview mirror shaped,wide temp.
	1280×720	198.72×111.78	IPS	LVDS	211.1×126.5×5.3	1200	automotive
198.91×111.89					IPS	MIPI	211.1×126.5×5.8



Capacitive Touch Panel			TFT LCD				Touch Display Module	
Size (inch)	Resolution (pixels)	AA Dimension (mm)	Display Mode	Interface	Outline Dimension (W×H×D,mm)	Max Brightness (cd/m ²)	Remark	
9.2	1280×320	226.56×56.64	IPS	LVDS/MIPI	243.57×69.5×4.6	5500	rearview mirror shaped	
9.3	1600×320	232.037×46.419	IPS	LVDS	241.16×57.56×8.03	3000	rearview mirror shaped	
					241.11×57.19×8.63	5500	rearview mirror shaped	
9.7	1024×768	196.61×147.46	IPS	LVDS	210.2×164.25×2.8	400		
	768×1024	174.456×207.94	IPS	MIPI	210.2×164.2×5.0	600		
10.1	1024×600	222.72×125.28	TN	RGB/LVDS/MIPI	235×143×2.9	350		
					235×143×4.5	1000		
					235×143×5.0	650		
	720×1280	125.28×222.72	IPS	MIPI	235×143×4.5	1000		
					235×143×5.0	550		
	1280×720	223.68×125.82	IPS	LVDS	143×234.95×4.4	400		
	1280×800	216.96×135.60	IPS	LVDS	235×143×4.5	400		
					238.6×148.0×6.5	1300	automotive, wide temp.	
					229.46×149.1×2.5	400		
					229.46×149.1×4.8	1000		
					229.80×149 ×6.2	2600		
	800×1280	135.36×216.576	IPS	MIPI	230.0×150.×6.5	2000		
1200×1920	135.36×216.58	IPS	MIPI	143.0×228.6×2.6	400			
1920×1200	216.81×135.5	IPS	LVDS	142.82×228.22×2.25	380			
				228.5×149×4.55	1200			
10.2	800×480	222×132.48	TN	RGB	229.46×149.01×2.5	380		
	1280×480	243.84×91.44	IPS	LVDS	237.8×156×8.4	1800		
10.25	1920×720	243.65×91.37	IPS	LVDS	265.2×109.8×7	1200	bar type, wide temp.	
					254.71×105.88×6.03	1200	bar type, wide temp.	
					254.71×107.07×6.03	1200	bar type, wide temp.	
					261×110.5×7.65	1200	bar type, wide temp.	
					265.2×109.8×7	1200	bar type, wide temp.	



Capacitive Touch Panel			TFT LCD				Touch Display Module
Size (inch)	Resolution (pixels)	AA Dimension (mm)	Display Mode	Interface	Outline Dimension (W×H×D,mm)	Max Brightness (cd/m ²)	Remark
10.4	1024×768	211.2×158.4	IPS	LVDS	236×174.3×5.75	600	
		210.43×150			238.6×175.8×6.5	1200	
	800×600	211.2×158.4	TN	RGB	228.5×175.5×6.15	250	
11.3	440×1920	252.86×57.95	IPS	MIPI	266.44 ×64.98 ×4.6	500	bar type
11.6	1920×1080	256.32×144.18	IPS	EDP	267.9×168.2×2.8	300	
					267.72×164.42×6.1	1000	
12.1	1024×768	245.76×184.32	IPS	LVDS	260.5×204×8.6	1000	
12.3	1920×720	292.03×109.51	IPS	LVDS	311.4×130.8×19.32	1000	automotive, bar type, wide temp.
					312.6×132.2×13.3	1000	
					312.6×132.2×7.8	1000	
					302 ×125.4 ×6.2	850	
		292.18×109.512	IPS	LVDS	312.6×132.2×7.8	1000	
		292.032×109.512	IPS	LVDS	302.63×123.60×6.55	850	
					299×120×6.51	1200	
301.89×124.87×7.45	1200						
13.3	1920×1080	293.76×165.24	IPS	EDP	305.2×178.1×2.6	300	
					307.6×183.05×5.5	800	
	3840×2160	293.76×165.24	IPS	EDP	302.46×188.17×6.36	1500	4K, high brightness, 100% NTSC
14	1920×1080	308.16×173.34	IPS	EDP	318.76×188.94×5.73	1050	
14.9	1280×239	374.78×69	IPS	RGB/MIPI	421×101×26.8	420	bar type
15.6	1920×1080	344.16×193.59	IPS	EDP	359.5×223.75×3.3	300	
					360×222.23×6.4	1000	

Capacitive Touch Panel

TFT LCD

Touch Display Module

Touch Display Modules

- Size available for 0.96" – 55"
- Optical Bonding & Tapes Bonding available
- One stop solution
- Option for Adapter Board, Cable, Housing



Capacitive Touch Panel

TFT LCD

Touch Display Module

Standard Touch Display Modules List

Size (inch)	P/N	Resolution	Luminance (W/ CTP) (nits)	Viewing Angle	LCM A.A (mm)	Outline Dimension (mm)	C.G Thickness	LCD Interface	CTP	Interface	CTP IC	Bonding Technique	Operating Temperature °C	Storage Temperature °C
4.3	JT043TM002-V1	800*480	680	80/80/80/80	95.04*53.84	126.04*84.86*9.13	2.0	LVDS		USB&I2C	EXC81W32	Optical bonding	-30 ~ 80	-30 ~ 80
5.0	JT050TM001-V1.0	800*480	850	80/80/80/80	108.00*64.80	130.63*97.63*5.93	2.0	RGB		I2C	CYTMA568	Optical bonding	-20 ~ 70	-30 ~ 80
5.0	JT050TM015-V1	800*480	900	80/80/80/80	108.00*64.80	133.00*89.80*9.06	2.0	LVDS		USB&I2C	EXC81W32	Optical bonding	-30 ~ 80	-30 ~ 85
7.0	JT070TM002-V2.0	1024*600	500	85/85/85/85	154.21*85.92	179.21*110.92*8.92	1.1	LVDS		I2C	CYTMA568	Air bonding	-20 ~ 70	-30 ~ 80
7.0	JT070TM005-V1.0	800*480	900	80/80/80/80	152.40*91.44	180.00*117.00*12.21	6.0	RGB		I2C	EXC80W32	Optical bonding	-30 ~ 85	-40 ~ 90
7.0	JT070TM008-V1.0	1280*800	340	85/85/85/85	149.76*93.60	174.00*115.00*5.7	1.1	LVDS		I2C	EXC80W32	Optical bonding	-20 ~ 70	-30 ~ 80
7.0	JT070TM009V1.0	1280*800	500	85/85/85/85	149.76*93.60	161.00*107.00*5.9	0.55	LVDS		I2C	ILI2511	Optical bonding	-20 ~ 70	-30 ~ 80
7.0	JT070TM010-V1.0	800*480	420	89/89/89/89	152.40*91.44	197.10*144.14*10.1	3.0	LVDS		I2C	ATMXT874U	Optical bonding	-30 ~ 85	-40 ~ 85
7.0	JT070TM012-V1.0	1024*600	500	85/85/85/85	154.21*85.92	177.00*122.00*10.19	3.0	LVDS		I2C	GT9271	Air bonding	-20 ~ 70	-30 ~ 80
7.0	JT070TM014-V1.0	1024*600	480	85/85/85/85	154.21*85.92	185.21*116.92*9.05	2.0	HDMI		USB	ATMXT1664T3	Air bonding	-20 ~ 70	-30 ~ 80
7.0	JT070TM015-V1.0	1024*600	240	85/85/85/85	154.21*85.92	185.21*116.92*9.05	2.0	MIPI		USB&I2C	ATMXT1664T3	Air bonding	-20 ~ 70	-30 ~ 80
7.0	JT070TM016-V1.0	1024*600	250	85/85/85/85	154.21*85.92	185.21*116.92*9.05	2.0	MIPI		USB&I2C	ATMXT1664T3	Optical bonding	-20 ~ 70	-30 ~ 80
7.0	JT070TM017-V1.0	1024*600	500	85/85/85/85	154.21*85.92	185.21*116.92*9.05	2.0	LVDS		USB&I2C	ATMXT1664T3	Optical bonding	-20 ~ 70	-30 ~ 80
7.0	JT070TM023-V1	1024*600	850	80/80/80/80	154.21*85.92	185.21*116.92*11.83	2.0	LVDS		USB&I2C	EXC81W32	Optical bonding	-30 ~ 80	-40 ~ 85
8.0	JT080TM002-V1	1280*720	1000	85/85/85/85	177.02*99.58	207.64*130.36*12.66	2.0	LVDS		USB&I2C	EXC81W32	Optical bonding	-30 ~ 85	-40 ~ 85

Standard Touch Display Modules List

Size (inch)	P/N	Resolution	Luminance (W/ CTP) (nits)	Viewing Angle	LCM A.A (mm)	Outline Dimension (mm)	C.G Thickness	LCD Interface	CTP Interface	CTP IC	Bonding Technique	Operating Temperature °C	Storage Temperature °C
10.1	JT101TM004-V1.0	1280*800	850	80/80/80/80	216.96*135.60	261.00*180.00*7.71	2.0	LVDS	I2C	GT928	Optical bonding	-20 ~ 70	-30 ~ 80
10.1	JT101TM006-V1.0	1280*800	1000	85/85/85/85	216.96*135.60	246.00*173.80*9.7	2.8	LVDS	USB	ILI2511	Optical bonding	-30 ~ 80	-30 ~ 80
10.1	JT101TM010-V1.0	1280*800	350	85/85/85/85	216.96*135.60	261.30*180.30*5.65	2.0	LVDS	I2C	GT9271	Optical bonding	-20 ~ 70	-30 ~ 80
10.1	JT101TM011-V1.0	1280*800	850	80/80/80/80	216.96*135.60	247.96*166.60*7.63	2.0	LVDS	USB&I2C	ATMXT1664T3	Optical bonding	-30 ~ 80	-30 ~ 85
10.1	JT101TM016-V1.0	1920*1200	850	80/80/80/80	216.81*135.50	247.96*166.60*7.45	2.0	LVDS	USB&I2C	ATMXT1664T3	Optical bonding	-20 ~ 70	-30 ~ 80
10.1	JT101TM017-V1	1280*800	850	80/80/80/80	216.81*135.50	247.96*166.60*11.06	2.0	LVDS	USB&I2C	EXC81W32	Optical bonding	-30 ~ 80	-30 ~ 85
10.4	JT104TM002-V1.0	1024*768	1000	80/80/80/80	210.43*157.82	270.00*190.00*9.8	2.0	LVDS	I2C	ILI2511	Optical bonding	-20 ~ 70	-30 ~ 80
10.4	JT104TM004-V1	1024*768	1000	80/80/80/80	211.20*158.40	251.43*198.82*12.80	2.0	LVDS	USB&I2C	EXC81W32	Optical bonding	-30 ~ 80	-40 ~ 85
11.6	JT116TM001-V1.0	1920*1080	420	89/89/89/89	256.32*144.18	286.16*173.28*12.85	4.0	EDP	USB&I2C	EXC80H60	Optical bonding	0 ~ 50	-20 ~ 60
12.1	JT121TM002-V1.0	1280*800	380	85/85/85/85	262.66*164.16	292.12*194.20*10.06	2.0	LVDS	USB&I2C	ATMXT1664T3	Optical bonding	-20 ~ 70	-30 ~ 80
12.1	JT121TM003-V1.0	1024*768	850	85/85/85/85	245.76*184.32	286.76*225.32*11.85	2.0	LVDS	USB&I2C	ATMXT1664T3	Optical bonding	-20 ~ 70	-30 ~ 80
12.1	JT121TM005-V1	1024*768	850	85/85/85/85	245.76*184.32	286.76*225.32*11.85	2.0	LVDS	USB&I2C	EXC81W32	Optical bonding	-20 ~ 70	-30 ~ 80
15.0	JT150TM004-V1.0	1024*768	850	89/89/89/89	304.13*228.10	356.13*273.00*13.1	2.0	LVDS	USB&I2C	ATMXT1664T3	Optical bonding	-20 ~ 70	-20 ~ 70
17.0	JT170TM001-V1.0	1280*1024	210	89/89/89/89	337.92*270.34	385.52*313.40*12.1	2.0	LVDS	USB&I2C&RS232	ILI2510	Optical bonding	0 ~ 50	-20 ~ 60
18.5	JT185TM001-V1.0	1366*768	210	89/89/89/89	409.80*230.40	440.80*271.40*13.5	1.1	LVDS	USB&I2C&RS232	EXC80W84	Air bonding	0 ~ 50	-20 ~ 60
19.0	JT190TM002-V2.0	1280*1024	850	89/89/89/89	374.78*299.83	411.32*336.06*14.1	4.0	LVDS	USB&I2C&RS232	ATMXT2952TD	Optical bonding	0 ~ 50	-20 ~ 60
21.5	JT215TM001-V1.0	1920*1080	560	89/89/89/89	476.64*268.11	515.80*307.31*15	3.0	LVDS	USB&I2C&RS232	ILI2510	Air bonding	-20 ~ 70	-30 ~ 80
31.5	JT315TM002-V2.0	1920*1080	400	89/89/89/89	349.20*392.85	759.40*453.85*14.4	3.0	LVDS	USB&I2C&RS232	ATMXT2952TD	Air bonding	0 ~ 50	-20 ~ 60
43.0	JT430TM002-V1.0	1920*1080	320	89/89/89/89	940.00*528.90	996.30*586.50*17.8	3.0	LVDS	USB&I2C&RS232	ATMXT2952TD	Air bonding	0 ~ 50	-20 ~ 60

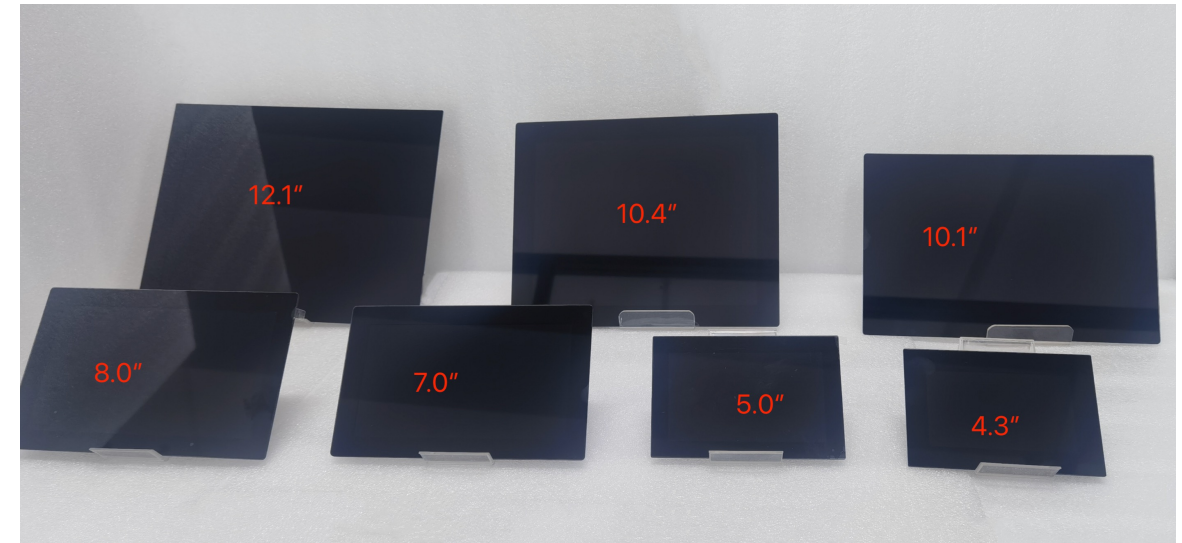
Family Concept Touch Display Modules

Key Features

- Size from 4.3" to 12.1"
- Same pinouts for Display and Touch
- With LED driver , PWM / Enable function
- Cover glass printing with anti-UV ink
- Optical Bonding between Display and Touch, Anti-UV Glue
- Support Water, Gloves, Noisy touch

Power Supply

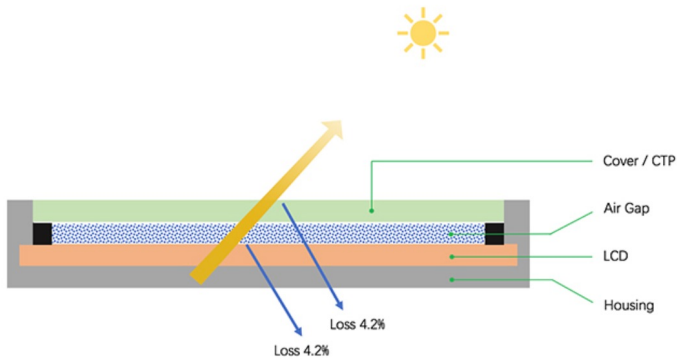
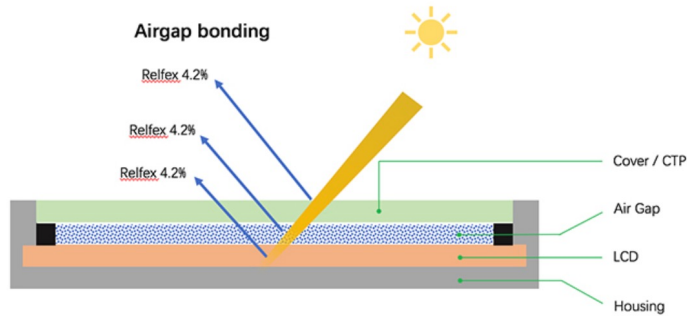
- 3.3V for LCD
- 12V for Backlight
- 3.3V (I2C) or 5V (USB) for Touch



Family Concept Modules

Size	P/N	Resolution	Display Mode	Brightness (W/ Touch)	Operation Temp.	Touch IC	Interface	
							Display	Touch
4.3	JT043TM002-V1	800 x 480	IPS	640	-30 ~ 80 °C	EXC81W32	LVDS	USB or I2C
5.0	JT050TM015-V1	800 x 480	IPS	900	-30 ~ 80 °C	EXC81W32	LVDS	USB or I2C
7.0	JT070TM023-V1	1024 x 600	IPS	850	-30 ~ 80 °C	EXC81W32	LVDS	USB or I2C
8.0	JT080TM002-V1	1280 x 720	IPS	1000	-30 ~ 85 °C	EXC81W32	LVDS	USB or I2C
10.1	JT101TM017-V1	1280 x 800	IPS	850	-30 ~ 80 °C	EXC81W32	LVDS	USB or I2C
10.4	JT104TM004-V1	1024 x 768	IPS	1000	-30 ~ 80 °C	EXC81W32	LVDS	USB or I2C
12.1	JT121TM005-V1	1024 x 768	IPS	850	-20 ~ 70 °C	EXC81W32	LVDS	USB or I2C

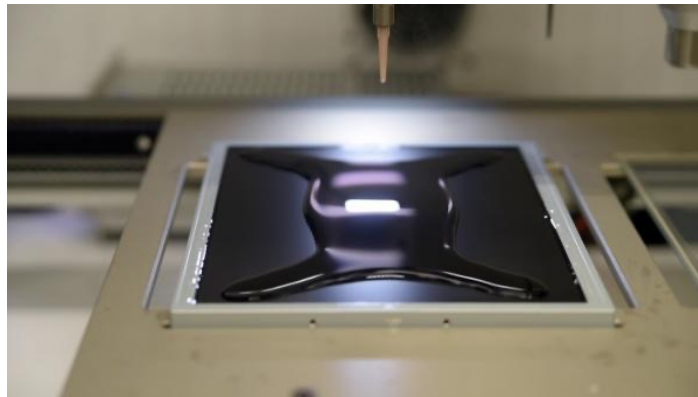
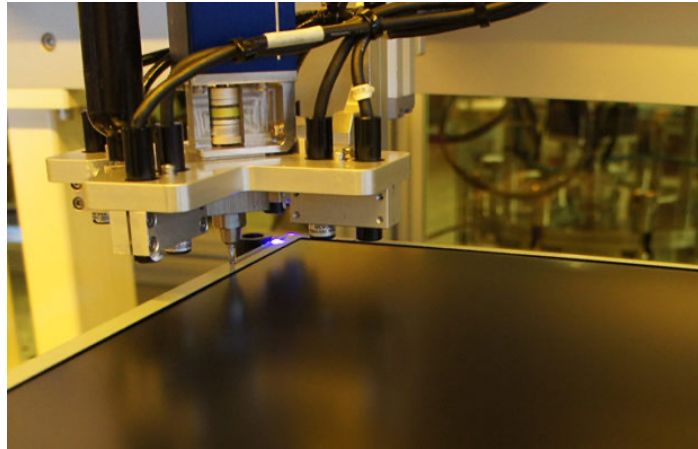
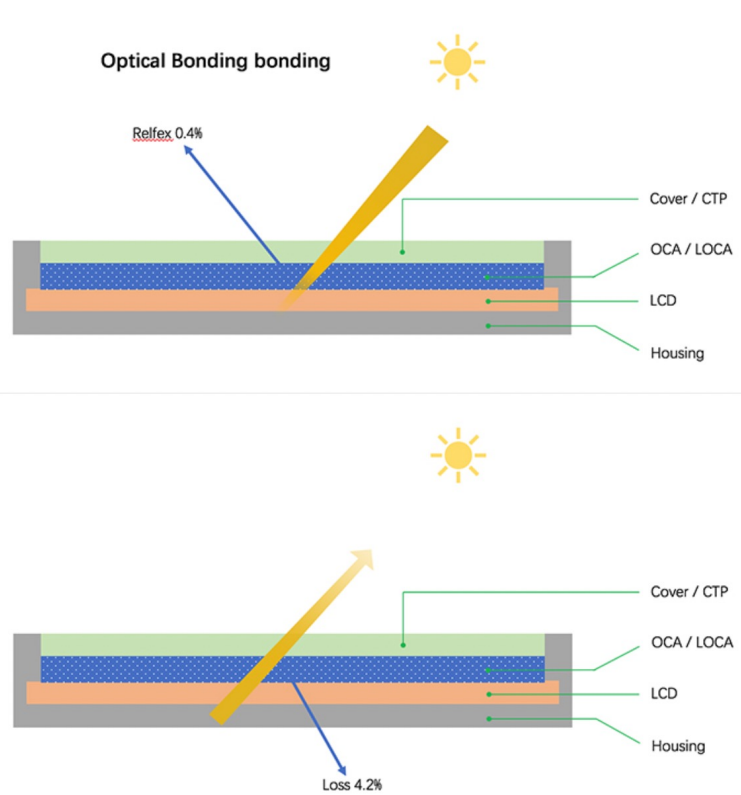
Tapes Bonding



□ Tapes Bonding Features

- Easy assembly & disassembly
- Low cost
- High reflection rate
- Lower sunlight readability
- Lower impact resistance
- Easy to enter with dust, stains, etc

Optical Bonding



□ Optical Bonding Advantages:

- Increase the products stability
- Increase sunlight readability
- Increase impact resistance
- Resist stains, dirt, dust and moisture
- Not turn yellow or black after long time exposed under strong sunlight.

□ Optical Bonding Tech (1.5 - 86 inch) :

- Mitsubishi OCA Bonding (size <10.1", LCD without up metal frame)
- Wacker SILGEL & LUMISIL Glue (Size <86" , LCD have thick up metal frame)

Jutouch Optical Bonding Solutions:

- 100% Automatically Optical Bonding Machine
- Automatically air plasma cleaning on LCD and Touch Panel before bonding
- Dispensed LUMISIL245UV to seal the gap between bezel and TFT and for the Dam Glue
- Filled LUMISIL102FCA/B on main bonding for full lamination
- Use N9111 for reinforcing between TP and LCD modules to strengthen the bonding strength



Wacker Chemicals (China) Co.,
Ltd.
Bldg.3,1535, Hongmei Road
Caohejing Hi-Tech Park
Shanghai,200233, P.R. China
Tel. +86 21 6130-2000
Fax +86 21 6130-2500

To All

We hereby confirm that JuTouch Technology Co.,Ltd use our silicone materials and do the optical bonding for 15.6-inches displays by our following process

1. Dispensed LUMISIL245UV to seal the gap between bezel and TFT and for the Dam glue
2. Filled LUMISIL102FCA/B on main bonding for full lamination
3. N9111 is for reinforcing between TP and LCM modules to strengthen the bonding strength.

At the same time ,we confirm that the bonding process of JuTouch is completely correct under our operation guidance . And TP and LCM modules are also do the Air-Plasma treatment before full lamination.
All the processes are completely correct and the reliability property is recognized by our WACKER .

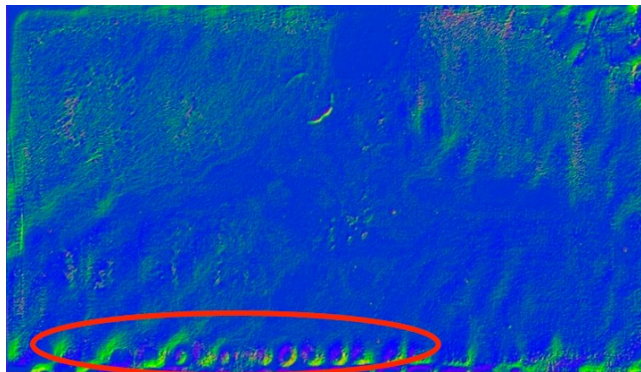
William Yuan
2021. 8. 19
william.yuan@wacker.com

Dated : 2021-08-19

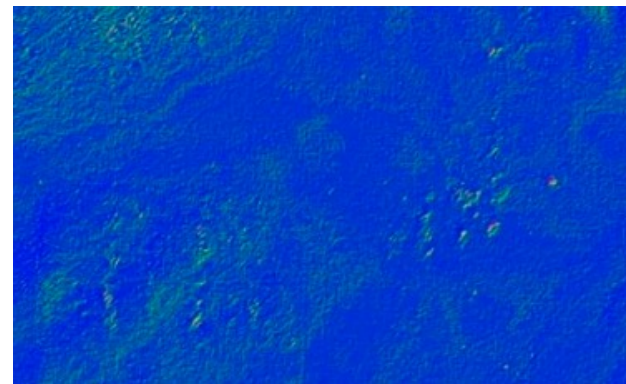
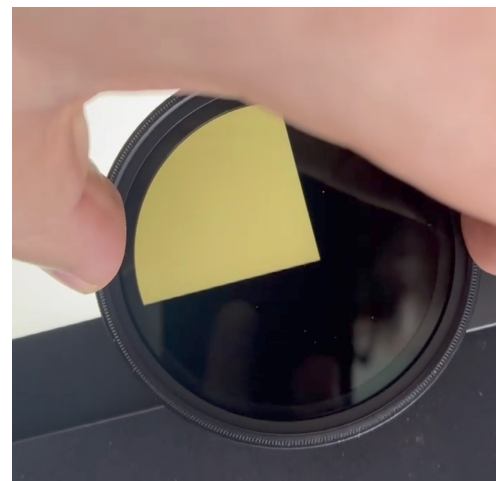
Signature: William Yuan

Wacker Chemicals (China)Co., Ltd

No. SC20200701



~~Cheap Optical Bonding Solution~~



JUTOUCH Optical Bonding Solution

Adapter Board Options



- TCON Board
- Adapter Board
- Interface Covert Board
- Backlight Driver Board

Main Fields in Applications

- We have hundreds of customers from different industries.
- 90% Jutouch mass production projects are from industrial and medical market which has long lifespan.
- Jutouch have different solution for different applications.
- Jutouch guarantee long time supply warranty.



Main Materials Partners

Cover Lens:



IC controller:



LCD Display:



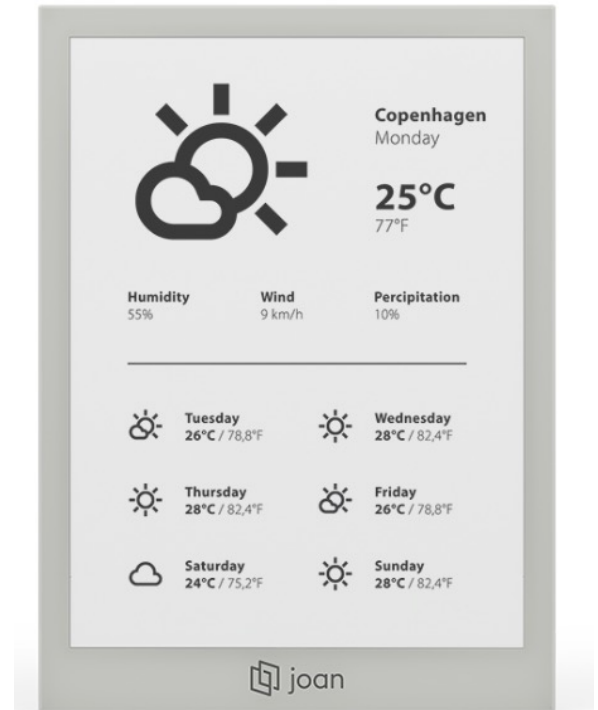
Case Show

- 5inch 720x1280 resolution Touch Display for Brilliant
- High quality requests for touch and display and bonding



Case Show

- 6inch touch display for VISIONECT
- Optical bonding with EINK display
- Great touch feeling on cover glass
- Very strict requests for bonding tolerance and color control



Case Show

- 9inch Touch Pad & Guitar Neck Touch Button Panel
- Great touch feeling & fast touch response time (<20ms) for the 9inch touch pad
- 60 touch buttons on Guitar Neck Panel & Fast touch response time (<20ms), also it has great touch feeling



Case Show

- 11.6inch Touch Display for Naval ship display meters
- 11.6inch automotive grade LCD display with high luminance, wide operating temperature and long led lifetime
- Great touch performance for water, gloves, high noisy.
- Special EMI shielding layer
- Anisotropic conductive double-sided adhesive copper for connect LCD metal housing to enclosure





Thanks for your
attention